

IN MEMORY OF OUR PATRON JOYCE SEFTON



He had huge success at the Brisbane RNA and in Sydney and Perth.

The Rutledge Family continue to donate their time and energy to the Wondai AP & I Society to this day. Son John has been Poultry Chief Steward since 2001 and was also awarded a Life Membership. John's wife and family also play a significant role in supporting where possible, to ensure a successful poultry show is held each year. Invaluable, reliable, dedicated and unforgettable members are hard to find and even more difficult to replace. The Wondai AP & I Society have chosen to honour Joyce's memory through this dedication. She will be sadly missed by all, but will definitely be remembered by many as one of a kind, & a truly outstanding Wondai Citizen

REST IN PEACE JOYCE

**WONDAI SHOW
1ST & 2ND
SEPTEMBER 2023
SPONSORED BY**



- PETROLEUM -



THANKS GO ALSO TO

**JJ RICHARDS, RIVERINA, JA CARROLL,
SEILER EARTHMOVING, STEINHARDT
BUILDING & CONSTRUCTION, BROWN &
HURLEY, for their valued support**

J.J. Richards
& Sons Pty Ltd



SEILER EARTHMOVING
Owner operator with over 25 years experience.

Specialising in Dams, Drainage / Erosion Control,
Road Works, Stick raking and Land Clearing.

Hitachi DX195L, Grader FG95, 325hp Steiger & 12ft Laser Scoop

Covering Wide Bay, North, South and
Central Burnett areas, Quotes available.

QUALITY WORK - DONE ONCE - DONE RIGHT
Phone Brad on 4168 5949 or 0427 762 087

**J.A. CARROLL
SOLICITORS**

*Since 1931 - Local knowledge,
traditional service, modern practices*



**BROWN
AND
HURLEY**
The BIG TRUCK People



IN MEMORY OF OUR PATRON JOYCE SEFTON

**JOYCE SEFTON (nee RUTLEDGE)
1933 – 2023**

The Wondai Community has recently lost one of its longstanding pillars. Joyce Sefton (nee Rutledge) was an invaluable and long serving member of the Wondai AP & I Society, contributing her precious voluntary labour & time for many years. Life Membership was awarded to Joyce in 2001 and then in 2023 her contribution to the Society was further recognized with the title of Patron being granted to her. Her commitment to the community has been unparalleled and she was held in high esteem by many as a respected mentor.

The Burnett Kennel Club was formed in 1987 with Joyce being one of the founding members and was very well respected within the dog world. Joyce, along with her late husband Jack and their family, played a variety of integral roles within the society and were the driving force behind the construction of a new dog area at the Wondai Showgrounds. Joyce held various positions within the Club including President, Steward & Patron. She was a successful Welsh Pembroke Corgi breeder, trading as 'Noelaven Kennels'. They showed in every State except Northern Territory & Western Australia. The Rutledge family's commitment was once again acknowledged in 1993 with the naming of the 'Jack Rutledge Arena' - the Dog Ring at the Wondai Show Grounds.

Joyce's Father Frank Berg raced trotters at many Wondai Shows, with his horse 'Airstream' holding the time record for many years in the 1950's.

CONTINUED PAGE 132

WESTLINK PETROLEUM BULL RIDE ALSO SPONSORED by

Rural Steel Supplies, Wondai IGA, Astill's Electrical, Coppards, Cooloola Food Services, Crowies Paints Kingaroy, CWB Plumbing, Cr Scott Henschen, Mayor Brett Otto, Dental Essentials, Hobbs & Assoc, Murgon Betta Home Living, Murgon Mitre 10, Pearce Site Maintenance, Pratt Agencies, South Burnett Vets, Swifthill Dog Enclosures, Steinhardt Building & Construction, Virgo Funerals, Wondai Colonial Motel, Wondai Mechanical, Robinsons Wondai News, Wondai Post Office, & Zischke Electrical

SWIFTHILL ENCLOSURES



FOR ALL YOUR PET ENCLOSURE NEEDS!

Contact - Sarah & Bryce Swift
0437 929 621 sarah.swifhill@gmail.com

RURAL STEEL SUPPLIES



robinsons EST 1974




PEARCE SITE



MAINTANCE
BRYCE PEARCE 0491 637 182

FREE ENTERTAINMENT



GENERATION FUNERALS
BUNDABERG • KINGAROY

Gary Baron's Train will take patrons around the grounds.
Sponsored by DATAWAVE IT & GENERATION FUNERALS



DataWave
Internet & Computers

12 Scott St, WONDAI
Ph: 4168 5789
www.datawave.net.au

TRACTOR PULL sponsored by SEILERS EARTHMOVING & BARAMBAH MACHINERY



SEILER EARTHMOVING
Owner operator with over 25 years experience.

Specialising in Dams, Drainage / Erosion Control, Road Works, Stick raking and Land Clearing.
Hitachi DX195L, Grader FG95, 325hp Steiger & 12ft Laser Scoop

Covering Wide Bay, North, South and Central Burnett areas. Quots available.

QUALITY WORK - DONE ONCE - DONE RIGHT
Phone Brad on 4168 5949 or 0427 762 087

BARAMBAH MACHINERY PTY LTD

BUNYA HWY, MURGON QUEENSLAND

PHONE 07 4168 1718



WHAT'S HAPPENING IN CENTRE RING



WONDAI BULL RIDE DEAN WELLER BULLS



**OPEN BULL RIDE
PRIZE MONEY \$2250
SENIOR BULL RIDE \$600**

**NOVICE BULL RIDE
PRIZE MONEY \$500
JUNIOR BULL RIDE UNDER 18 YRS
PRIZE MONEY \$350**

**BOYS STEER RIDE
UNDER 12 YRS
PRIZE MONEY \$150**

KIDS PODDY RIDE



**Entries to National Rodeo Association
Central Entries. Phone 07 5499 1700**

LADIES BARREL RACE



LADIES BARREL RACE
PRIZE MONEY \$750



JUNIOR BARREL RACE
PRIZE MONEY \$350



NOVICE BARREL RACE
JACKPOT

Entries to National Rodeo Association Central Enquiries 07 5499 1700
Wednesday 17th August between 10.00am & 2.00pm & Thursday 18th August
between 2.00pm & 6.00pm. Entries close on Thursday 18th August at 6.00pm.

Late entries up to Monday 28th August until 12 noon

HELICOPTER RIDES

GREAT OCEAN HELICOPTERS WILL BE AT THE SHOW



FREE ENTERTAINMENT



SPONSORED BY YESBERG EARTHMOVING

120 YEARS SINCE THE FIRST PASSENGER TRAIN CAME TO

"STEAMING BACK TO WONDAI"

120 YEAR REUNION OF WONDAI & THE 1ST PASSENGER TRAIN

JOIN US IN CELEBRATING.....

THURSDAY 14TH SEPTEMBER, 2023

COMMENCING FROM 5PM, CORONATION PARK, WONDAI WONDAI LIONS CLUB, WILL BE PROVIDING A FREE SAUSAGE SIZZLE

A MONUMENT & PLAQUE WILL BE PLACED IN THE PARK TO REPRESENT THIS HISTORICAL EVENT.

A TIME CAPSULE WILL BE PLACED IN THE MONUMENT TO BE RESURRECTED IN 30 YEARS TIME.....

IF YOU WOULD LIKE TO CONTRIBUTE TOWARDS THE CAPSULE PLEASE CONTACT - NOEL SELWAY selwayn428@gmail.com

ALL CHILDREN WHO ENTER THE COLOURING COMPETITION FOR THE WONDAI SHOW ARE ENCOURAGED TO COLLECT THEIR ENTRY AFTER THE SHOW. ALL COLOURING IN IS TO BE DROPPED INTO THE WONDAI NEWSAGENTS NO LATER THAN 8TH SEPTEMBER, SO IT CAN BE PLACED IN THE TIME CAPSULE!!



PROUDLY SUPPORTED BY WONDAI LIONS



A HUGE THANK YOU TO SOUTH BURNETT REGIONAL COUNCIL FOR HELPING FUND THIS PROJECT

A GREAT CATCH UP TO BE HAD

DINNER TO FOLLOW AT THE WONDAI DIGGERS CLUB PLEASE RSVP TO THE -WONDAI DIGGERS CLUB BY 1ST SEPTEMBER 2023 (PLEASE STATE WONDAI REUNION) WONDAI DIGGERS CLUB- 4168 5297

AMAZING MEMORABILIA WILL BE ON DISPLAY AT THE DIGGERS CLUB

RURAL AMBASSADOR & SHOWGIRL COMPETITIONS

.Are you looking for an opportunity to excel in leadership and community involvement, self-management and confidence?

Then why not consider entering:-

Miss Showgirl 18-28 yrs

Rural Ambassador 20-30 yrs

Junior Rural Ambassador 13-19 yrs

Junior Miss Showgirl 13-17 yrs

Junior Showgirl 7 - 12 yrs

Wondai Show Little Ringer 7 - 12 yrs

Tiny Tots 6 yrs & Under

For more details see pages 115 - 122 in this schedule
 Entries close Monday 1st August 2023 Interviews will take place at a function to be held at the Wondai Diggers Club on **Sunday 20th August** at a time to be announced. Nomination Forms and further information are available from Wondai News & the Show Secretary –
 Ph 0427 685 171 Email: secretary@wondaishow.com.au



2022 SHOW GIRLS & RURAL AMBASSADORS

FREE ENTERTAINMENT

Sponsored by:

JA Carroll & Huston Ford

J.A. CARROLL SOLICITORS

Since 1931 - Local knowledge, traditional service, modern practices



ANIMAL NURSERY



shutterstock.com · 1253702152

FACE PAINTING



ACCOMODATION IN & AROUND WONDAI

IF YOU ARE PLANNING TO STAY IN OR NEAR WONDAI FOR THE WEEKEND OF THE SHOW, PLEASE CONSIDER OUR LOCAL HOTELS/MOTELS WHO SUPPORT US.



**COLONIAL MOTEL
125 HALY ST,
WONDAI
PHONE 4168 5633**

**AUSTRALIAN
HOTEL/MOTEL
65 LAMB ST
MURGON
PHONE 4168 1095**



BRONZE SPONSORS:

Barbeques Galore, Bega/PCA, Cheryl Dunstan, Collards Fuel, Crumpton's Peanuts, Dan's Diner, Dimities Cottage, Extra Touch Design, Glen Munro Plumbing, K & G Gordon, Ivy Lane Hair Studio, Kathy Duff, Goomeri Emporium, Hitchley & Harrow, Kingaroy Laundromat, Kingaroy Toy World, Brett Kleinschmidt, Krause family Eidsvold, Glenis Miller, Murgon Fruit Mart, Pursers Coaches & Travel, Repco Kingaroy, Rutledge's on Farm Butchering, Joyce Sefton, Somethings Country, Steinhardt Plumbing, Urbann Beauty, Waterview Park Miniatures, Wooroolin Machinery, Wooroolin Vet Services, Mr & Mrs R Zischke,

OTHER SPONSORS & TROPHY DONORS:

Lynette Adriaans, Eileen Beer, Del Blanch, Leonie Evans, Ros Heit, Iszlaub Family, Pauline Keates, Elsie Knight, Ivy Murray, South Burnett Feather Club, South Burnett Cake Icers, South Burnett Orchid Club, Denise Steinhardt, Supa Cheap Auto, Wonda Art Gallery, Wooroolin Fabrics,



*Wonda Showgirl
&
Rural Ambassador*



Judging Afternoon Tea

20th August 2023 1pm, Judging starts

Wonda Diggers Club
Mackenzie Street, Wonda

PLEASE NOTE CHANGE OF DATE



SILVER SPONSORS:

Across Country R/E, Ag Shows of the South Burnett, Anderson's Produce, Astills Electrical, Aus-sie Land & Livestock, B & L Firewood, Barambah Business Services, Barambah Machinery, BCF Kingaroy, Bendigo Bank, Cooloola Foods, Coppards Kingaroy, Country Trucker Caps, Crowies Paints Kingaroy, CWB Plumbing, Deb Frecklington MP, R & R Dower, Elders Murgon, Joanne Evans & Family, Gap Creek Online, Gary Angel Bulk Haulage, Generation Funerals, Gentech, Gleich T'port, GoldMix, Goomeri Transport, Grant, Daniels & Long, Hams Cranes, Heatherdoon Stud Wondai, Hobbs & Assoc, Huston Ford, Josh Steinhardt, Kewpie Stockfeeds, Kingaroy Plumbing Works, Kingaroy Tree Services, Kjal Pastoral, Les's Handyman Services, LJ Hooker, Loggin P/L, Mayor Brett Otto, Murgon Betta, Murgon Mitre 10, MV Fabrication, NC Webber Building Services, Norco Kingaroy, Ollies Mowers, Parker Plumbing, Pearce Site Maintenance, Performance Feeds, Pratt Agencies, Ryans Butchery, SAP Kreations & Proston Post Office, South Burnett Vets, The Phat Wag, Total Building Solutions, Tranquility & Soul, Unicorn Specialty Foods, Virgo Funerals, Weeping Willow Boutique, G & V Wicks, Wicks & Co Agencies, Wondai Colonial Motel, Wondai Garden Club, Wondai Home Hardware, Wondai Mechanical, Wondai News, Wondai Pharmacy, Wondai Post Office, Wondai Traders, Wondai Woodworkers, Zischke Electrical,

NOTE TO EXHIBITORS and SPACE HIRERS

Pavilion Entry Forms are located in the middle of the Show Schedule, on line or at Wondai News. Entry forms for the truck show, chain saws & low & slow cooking are also in the schedule or on line.

Other specific Entry Forms eg dairy, prime & stud beef cattle, poultry, & ute muster can be obtained from the Secretary 0427 685 171, secretary@wondaishow.com.au or downloaded at: www.wondaishow.com



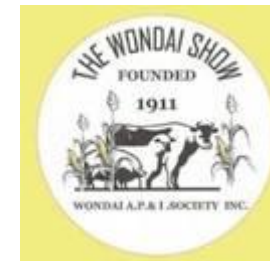
The horse section entries will be taken on the Saturday of the show.



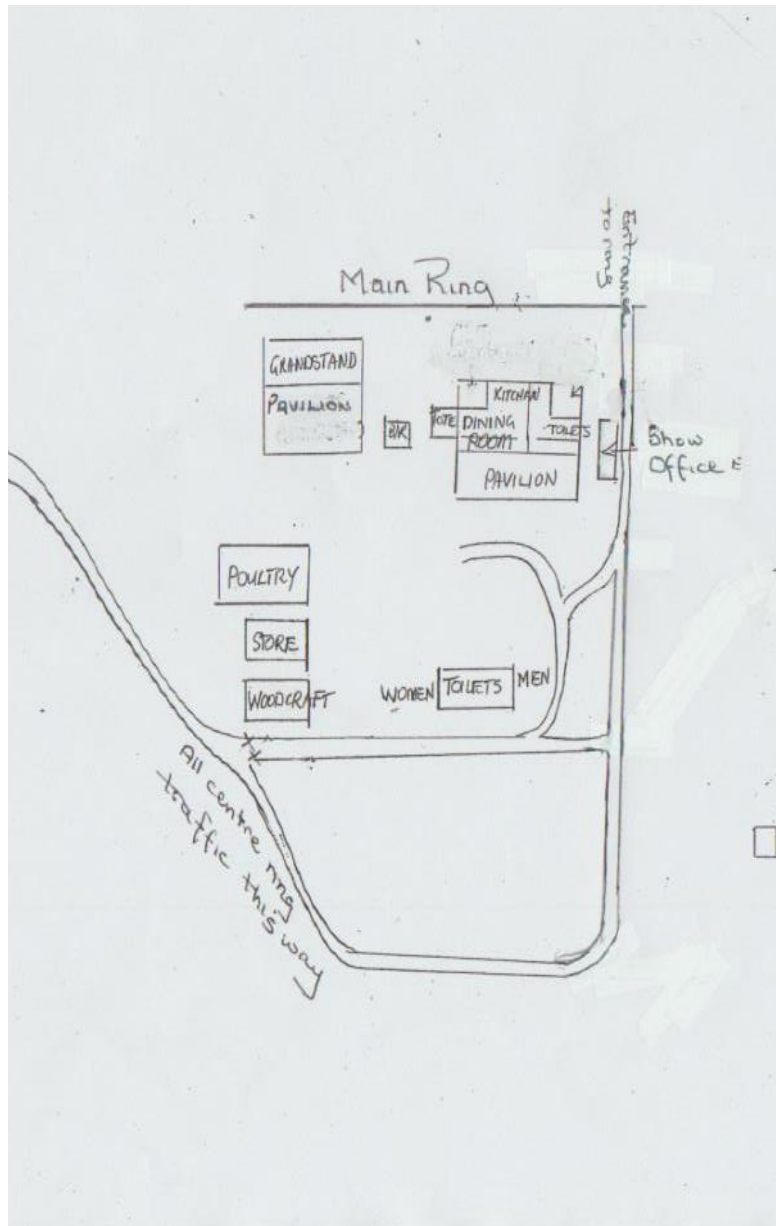
Please make all **cheques** payable to **'Wondai AP & I Society Inc.'**
Direct Deposit - BSB: 633000

Account: 1593 524 18

Reference your last name followed by Section (eg stud beef)

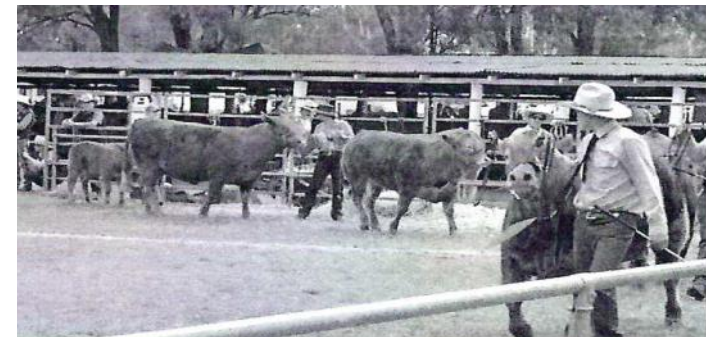


New Road around the back of the Cattle Section to get to Main Ring. All traffic to use this route on Saturday 2nd September



Wondai A P & I Society Inc. acknowledge the support and assistance of CROW FM 90.7 in obtaining sponsorship for this year's Show and sincerely thanks all sponsors, product and trophy providers.

PLATINUM SPONSORS: Westlink Petroleum, Kingaroy Mower Centre, Crow FM, Rural Steel Supplies, Yesberg Earthmoving,
GOLD SPONSORS: BJC Transport, Brown & Hurley, JA Carroll, Cheshire Machinery, DataWave IT, Dental Essentials, Graincorp, Harley Heavy Diesel, JJ Richards, Ken Mills, Lowes Petroleum, Nutrien Ag Solutions Murgon, Pakaderinga Feedlot, Riverina Stockfeeds Murgon, SKG Livestock, Smithfield Cattle Co, Seilers Earthmoving, Steinhardt Building & Construction, Swickers, Bryce Swift, Teys, Tranzmile, Wondai IGA, Yehaa Hay



TINY TOTS AWARD (BOYS & GIRLS 6YRS & UNDER)

To encourage boys and girls to become involved in our local shows, rural based activities and the wider community, the Wondai AP & I Society Inc. invites entrants for

IVY LANE
Hair Studio

2023 Tiny Tots

Aged 6 years & Under

Open to boys & girls aged 6years & under (as of **1st August 2023**) who are Australian citizens and residing in the South Burnett Sub-Chamber area (Blackbutt, Goomeri, Kingaroy, Murgon, Nanango, Proston & Wondai). Entries close Monday 1st August, with interviews to take place at a function to be held at the Wondai Diggers Club on 13th August 2023

We would like these entrants to attend the Wondai Show, & be escorted to visit various sections, presenting ribbons etc, participating in the Official light Lunch & Official Opening & help at the Christmas Eve Carnival in Wondai, organised and run by the Show Society **The winner receives** a prize donated by **Ivy Lane Hair Studio, Wondai** & other sponsors to be named later. All entrants receive a gift.

Nomination Forms & further information are available from the Show Secretary – Phone: 0427 685 171

Email: secretary@wondaishow.com.au on the web page, or from Wondai News



WONDAI A P & I SOCIETY INC. OFFICE BEARERS

Patrons: Kevin Perkins & Joyce Sefton
 President: Amanda Palmer
 Secretary/Treasurer: Sue Hullock
 Chief Hall Steward: Del Blanch

LIFE MEMBERS—Winston Burrows, Noreen Brier, Susan Hullock, Sandra Ireland, Norma Iszlaub, Errol Kemp, Arthur Martin, Laurie Martin, Dennis Morris, Ivy Murray, Kevin & Jan Perkins, Andrew Perkins, Glenis & Roy Radunz, John Rutledge, Joyce Sefton, Gil & Michelle Smith, Ray Zischke

CHIEF STEWARDS

<p> 1. HORSES 1. MINI HORSES 2. DAIRY CATTLE 3. STUD BEEF 4. POULTRY 5. FARM PRODUCE 6. FRUIT & VEGETABLES 7. FLORICULTURE 8. CULINARY 9. HOME PRESERVES 10. NEEDLEWORK 11. HANDCRAFT 12. GROUP DISPLAY 13. PHOTOGRAPHY 14. FINE ARTS 15. COLLECTORS CORNER 16. WOODCRAFT 17. COLOURING IN COMP 18. LEGO 19. SCARECROW COMP 20. SCHOOLS DISPLAY COMP 21. CHAINSAW RACING 22. SHOW & SHINE 23. UTE MUSTER 24. TRUCK SHOW & SHINE 25. LOW & SLOW COOKING </p>	<p> Greg Palmer & Bryce Pearce David Pitstock Jill Keates Joanne Evans Andrew Perkins John Rutledge Josh Steinhardt Zischke Family Lynette Adriaans Del Blanch Elsie Knight Ros Hansen Fay Kerkow Janet Morris Amanda Stevens Casey Davie Brian Labudda David Olm Dennis Morris Felicity Jorgensen Del Blanch Dennis Morris Tamzin Pearce Margaret Long Amanda Stevens Lauren & Harley O'Neil Bryce Pearce </p>
---	---

JUDGING DAYS AND STARTING TIMES

1. HORSES	8.30am Saturday 2nd Sept
2. DAIRY	8.30am Saturday 2nd Sept
3. STUD BEEF	5.00 pm Friday 1st Sept
STUD BEEF	8.00am Saturday 2nd Sept
4. POULTRY	8.00am Saturday 2nd Sept
5. FARM PRODUCE	9.00am Friday 1st Sept
6. FRUIT & VEG	9.00am Friday 1st Sept
7. FLORICULTURE	9.00am Friday 1st Sept
8. CULINARY	9.00am Friday 1st Sept
9. HOME PRESERVES	9.00am Friday 1st Sept
10. NEEDLEWORK	9.00am Friday 1st Sept
11. HANDCRAFT	9.00am Friday 1st Sept
12. GROUP DISPLAY	9.00am Friday 1st Sept
13. PHOTOGRAPHY	9.00am Wed 30th Aug
14. FINE ARTS	9.00am Wed 30th Aug
15. COLLECTORS CORNER	9.00am Friday 1st Sept
16. WOODCRAFT	9.00am Friday 1st Sept
17. COLOURING IN	9.00am Friday 1st Sept
18. LEGO	9.00am Friday 1st Sept
19. SCARECROW	9.00am Friday 1st Sept
20. SCHOOLS DISPLAY	9.00am Friday 1st Sept
21. CHAINSAW RACING	9.30am Saturday 2nd Sept
22. SHOW & SHINE	9.30am Saturday 2nd Sept
23. UTE MUSTER	10.30am Saturday 2nd Sept
24. TRUCK SHOW/SHINE	9.30am Sat 2nd Sept
25. LOW /SLOW COOKING	5.30am Sat 2nd Sept



LITTLE RINGER AWARD (BOYS AGED 7—12)



New this year—to encourage the boys in our community to join in and help the Show Society

Open to boys between 7yrs & 12yrs who are Australian citizens and residing in the South Burnett Sub-Chamber area (covering Blackbutt, Goomeri, Kingaroy, Murgon, Nanango, Proston & Wondai). Entries close Monday 1st August, with interviews taking place at a function being held at the Wondai Diggers Club on 13th August 2023



Nomination Forms & further information are available from the Show Secretary – Phone: 0427 685 171
Email: secretary@wondaishow.com.au on the web page, or from Wondai News

JUNIOR SHOW GIRL AWARD

To encourage young people to become involved in agricultural shows, rural based activities & the wider community, the Wondai AP & I Society Inc. invites entrants for:

2023 Junior Showgirl

Aged 7 – 12 years

Prize donated by

Ivy Lane Hair Studio, Wondai & other local businesses

Open to girls aged between 7 years and 12 years (as of **1st August 2023**) who are Australian citizens and residing in the South Burnett Sub-Chamber area (Blackbutt, Goomeri, Kingaroy, Murgon, Nanango, Proston and Wondai).

Entries close Monday 1st August, & interviews take place at a function to be held at the Wondai Diggers Club on 13th August 2023

All entrants are expected to attend the Wondai Show, to be escorted to visit the various show sections, present ribbons etc, attend the Official light lunch and Show Opening and help at the Christmas Eve Carnival in Wondai, organised & run by the Show Society **The winner receives a gift from Ivy Lane Hair Studio & other sponsors yet to be finalized.**

Nomination Forms and further information are available from the Show Secretary – Phone: 0427 685 171

Email: secretary@wondaishow.com.au Or Wondai News

IVY LANE
Hair Studio



Being interviewed on Crow FM last year

SHOW ADMISSION PRICES

SHOW ADMISSION PRICES

FRIDAY -

Adults \$10

Pensioners & HS Students (with ID) \$6

SATURDAY

Adults \$10

Pensioners and HS Students (with ID) \$ 6

Primary School Students \$ 2

Pre - Schoolers & under FREE

PASS OUTS available on Friday & Saturday

GATE ENTRANCE: All patrons attending the Show (including exhibitors, competitors, stewards, trade site owners etc) pay the Gate Entrance Fee unless in possession of a Pass or a Special Invitation. Any queries should be directed to the Secretary **AFTER** the Gate entrance Fee has been paid.

CONTACT DETAILS

Postal Address: P O Box 159, Wondai 4606

Email: secretary@wondaishow.com.au

CONTACT SECRETARY : 0427 685 171

SHOW OFFICE OPEN 9am TO 6pm WEEK OF SHOW

(8pm on Thursday night)

OFFICE MOBILE NUMBER: 0427 685 171

CHECK OUT THE WEBSITE:

www.wondaishow.com

and like us on FACEBOOK!

AN ATM WILL BE ON THE GROUNDS ON SATURDAY



*Enjoy your visit to the 2023 WONDAL
SHOW*

Friday 1st September

9.00am - 3pm Pavilion judging (closed to the public)

5.00pm Stud Beef Cattle, Young Judges, Paraders & Schools (BBQ operating at the Cattle Area)

A big thank you to Graeme & Val Wicks for sponsoring the Sausage Sizzle & Drinks for our young competitors

Saturday, 2nd September

Early - Low & Slow cooking firing up in the main ring

Breakfast from 6.30am in Cattle Section
8.30am Judging of horses, stud beef cattle, dairy cattle and poultry begins

FREE ENTERTAINMENT FOR PATRONS

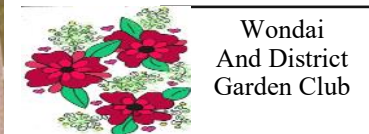
9.00am Pavilion, Side Shows & Trade Displays open. Display of antique tractors & stationary engines. Working Arts & Crafts Display in the Old Grandstand. Animal Nursery & Face Painting in front of Office

JUNIOR RURAL AMBASSADOR AWARDS

JUNIOR RURAL AMBASSADOR

Open to young Adults 13 to 19 years of age, residing in the South Burnett Sub-Chamber region (Blackbutt, Goomeri, Kingaroy, Murgon, Nanango, Proston and Wondai). The Winner receives a trophy and prizes from Wondai Pharmacy, & Wondai Garden Club and is invited to the Official light Lunch and Show Opening. All entrants are expected to visit the various sections of the show, presenting ribbons etc, and also to assist at the Christmas Eve carnival in Wondai which is organized and run by the Show Society.

Nomination forms and further information on this Competition are available on the Show website (www.wondaishow.com.au) and from the Show Secretary: Phone 0427 685 171 Email secretary@wondaishow.com.au & from Wondai News. **Completed nomination forms must be with the Secretary by Monday 1st August.**



2022 Junior Ambassador Winner & Runner up

Thank you to the sponsors of

**THE JUNIOR RURAL
AMBASSADOR COMPETITION**

Wondai Pharmacy

Wondai District Garden Club

And several other local businesses to be finalized.

JUNIOR MISS SHOWGIRL

Open to girls 13— 17 years of age, residing in the South Burnett Sub-Chamber region (Blackbutt, Goomeri, Kingaroy, Murgon, Nanango, Proston & Wondai).

Winner receives trophy & gifts from Wondai Pharmacy, Wondai Garden Club & other local businesses to be advised. All entrants are invited to the Official light Lunch & Official Show Opening. Entries close Monday 1st August, with interviews taking place at the Wondai Diggers Club on 13th August 2023. All entrants are expected to visit the various sections of the show, presenting ribbons etc. and assist at the Christmas Eve Carnival in Wondai which is organized and run by the Show Society. They are also most welcome to take part in Working Bees and assist in any other Show related activities.

Nomination forms and further information on this competition is available on the Show website (www.wondaishow.com) and from the Show Secretary: Phone - 0427 685 171 Email - secretary@wondaishow.com.au & also from Wondai News **Completed nomination forms must be with the Secretary by Monday 1st August**

Thank you to our sponsors of the Junior Miss Showgirl, Wondai Pharmacy, Ivy Lane Hair Studio, Urbann Beauty Bar, Angel Brows and other local businesses



Wondai
And District
Garden Club



FREE ENTERTAINMENT FOR PATRONS

- 9.30am** Chain Saw Racing commences centre ring. Trucks judging. Show & Shine exhibits by main gate ready for voting
- 10.00am** Side Show Alley
- 11.00am** Racing Lawn Mowers start
- 11.30am** **Official Opening by Dennis Morris**
- 12.00pm** **Official Light Lunch for invited guests**
- 12.30pm** **Grand Parade**
- 1.30pm** Wondai Town & District Band
- 2.00pm** Judging Ute Muster
- 3.00pm** Barrel Racing
- 4.00pm** Pavilion is closed.
- 4.30pm** Pavilion Entries & prize money ready for collection
- 5.00pm** Chainsaws Stihl v Husqvana in front of Grandstand Pavilion
- 6.00pm** Bull Ride round 1
- 7.30pm** Bull Ride round 2
- 8.30pm** till late Mr Q band
- Plenty of food & drink outlets throughout the grounds:**
- Licensed Bar— in centre ring open from 2.00pm BBQ – run by the Show Society by under cover area. Light lunches served from Kiosk in under cover area. Various food & drink outlets in Trade Display area

SHOW SECTIONS

	PAGE NO.
SECTION 1: HORSES	22
SECTION 2: DAIRY CATTLE	36
SECTION 3: STUD BEEF	41
SECTION 4: POULTRY	50
SECTION 5: FARM PRODUCE	58
SECTION 6: FRUIT & VEGETABLES	62
SECTION 7: FLORICULTURE	65
SECTION 8: CULINARY	69
SECTION 9: HOME PRESERVES	80
SECTION 10: NEEDLEWORK	82
SECTION 11: HANDCRAFT	85
SECTION 12: GROUP DISPLAY	88
SECTION 13: PHOTOGRAPHY	89
SECTION 14: FINE ARTS	92
SECTION 15: COLLECTORS CORNER	94
SECTION 16: WOODCRAFT	96
SECTION 17: COLOURING IN	98
SECTION 18: LEGO	100
SECTION 19: SCARECROW COMPETITION	101
SECTION 20: SCHOOLS COMPETITION	103
SECTION 21: CHAINSAW RACING	104
SECTION 22: SHOW & SHINE	106
SECTION 23: UTE MUSTER	108
SECTION 24: TRUCK SHOW & SHINE	109
SECTION 25: LOW & SLOW COOKING	111
MISS SHOWGIRL SPONSORS	115
RURAL AMBASSADOR	117
JUNIOR MISS SHOWGIRL	118
JUNIOR RURAL AMBASSADOR	119
JUNIOR SHOWGIRL	120
LITTLE RINGER	121
WONDAI PRINCE/PRINCESS	122
SPONSORS	123
BARREL RACING	128
BULL RIDE	129
TRIBUTE TO OUR PATRON JOYCE SEFTON	131

RURAL AMBASSADOR AWARD



**Queensland Chamber of
Agricultural Societies**

RURAL AMBASSADOR AWARD

This Award seeks to recognise young adults who symbolise the rural spirit, people with vitality who are forward thinking and with a passion for the land and local country shows.

Open to men and women aged 20 years and under 30 years (inclusive) as at 1st May **2024**

The Wondai winners of the above awards will represent Wondai Show Society at the South Burnett Sub-Chamber Finals at Wondai in **June 2024** from where the regional representatives for the State Finals at the Brisbane Exhibition will be chosen. Entry forms can be downloaded from the QCAS web site or from Wondai News. This Section sponsored by Wondai Pharmacy, Wondai Garden Club and other local businesses



MISS SHOWGIRL AWARD

Queensland Chamber of Agricultural Societies

MISS SHOWGIRL AWARD

Open to Women aged between 18 years and 28 years
inclusive as of 1st August 2024

The 2023 Wondai winner will receive a sash and prizes. All entrants will be invited to the Show opening & light Lunch. The winner will also represent Wondai Show Society at the South Burnett Sub Chamber Finals, held in June 2024 at Wondai from where the regional representative for the State Finals at the Brisbane Exhibition are chosen. Entry forms are available from Wondai News, or downloaded from the QCAS website. This section is sponsored by Wondai Pharmacy, the Wondai Garden Club, Ivy Lane Hair Studio, Urbann Beauty Bar, Angel Brows and other local businesses to be finalized.





WONDAL GARDEN CLUB





SHOW REGULATIONS

WONDAL SHOW REGULATIONS

1. Wondai Show is conducted subject to the Constitution and Rules of this Society and any Regulations which apply to individual sections. If any situation arises which is not covered by the Society's Constitution, Rules and Regulations, then the Constitution and Rules of the Queensland Chamber of Agricultural Societies shall prevail.
2. The Society will not, under any circumstances, hold itself responsible for any accident, loss, damage or mis-delivery of livestock or any other exhibit which may occur at any time covered by Show activity, and it shall be a condition of entry that each exhibitor shall hold the Association blameless and indemnify it against any cost or action, legal or otherwise arising through any accident, loss, damage or mis-delivery. All care will be taken but no responsibility accepted.
3. It is the responsibility of all exhibitors and space hirers to comply with the current Workplace Health and Safety Act together with all State and Local Government Regulations.
4. **All livestock exhibitors and space hirers must have their own Public Liability Insurance** and produce certification when requested.
5. Exhibitors & space hirers who bring electrical equipment for use on the grounds must comply with all current legislation.
6. All persons entering the Showgrounds during any period covered by Society activities shall abide by the Rules and Regulations of the Wondai A P & I Society Inc. and will pay admission on Show Day unless issued with an approved Show Society pass or invitation.

SHOW REGULATIONS continued

7. The President, Steward and/or Committee person in charge of any section of the Show has the discretionary right to refuse an entry by an exhibitor or space hirer at any time, without expressing reason, if the Society reasonably believes it is necessary to do so in order to maintain the standard, quality and safety of the Show.
8. Pavilion Stewards have the right to make new classes where not listed in the schedule, provided there are two or more entries.
9. Vouchers or product to the same value can be substituted for cash prizes.
10. All competitors compete at their own risk.
11. **All prize money, special prizes and ribbons are to be collected on Show Day unless prior arrangement is made with Section Steward & then within 60 days of show.**
12. In order to comply with the Society's insurance requirements, **all incidents** must be reported to the Secretary who will complete an Incident Form.
13. During any period covered by Show activities, all livestock and their movement must be the responsibility of the owner or owner's representative.
14. Livestock Stewards have the right to arrange for the removal from the grounds, at the owner's expense, of any beast found to be diseased, dangerously uncontrollable or otherwise unfit for the purposes of exhibition.
15. Any objections or protests should be submitted to the Secretary in writing for consideration at the next General Committee Meeting of the Society.

MAJOR SPONSOR



SHOWGIRL & RURAL AMBASSADOR SPONSORS 2023

ANGEL BROWS
 BCF
 DIMITIES COTTAGE
 EXTRA TOUCH DESIGNS
 GAP CREEK ON LINE
 IVY LANE HAIR STUDIOS
 KJAL FEEDLOT
 SP KREATIONS
 URBANN BEAUTY BAR
 WONDAI GARDEN CLUB
 WEEPING WILLOW BOUTIQUE
 WONDAI DIGGERS CLUB



DIMITIES COTTAGE



WONDAI GARDEN CLUB



IVY LANE Hair Studio

SECTION 26 LOW N' SLOW COOK OFF CONTINUED

WONDAI SHOW SOCIETY

LOW 'N SLOW COOKING RULES & REGULATIONS

11. The following cleanliness & safety rules will apply:

- No use of any tobacco products while handling meat.
- Cleanliness of the cook, assistant cooks, cooking devices & the team's assigned cooking space is required.
- Shirt & shoes must be worn.
- Sanitizing of work area should be implemented. Each contestant will provide a separate container for washing, rinsing & sanitizing utensils.
- After cooking, all meat must be held at 60°C or above OR cooked meat shall be cooled as follows: within 2 hours from 60°C to 21°C & within 4 hours from 21°C to 5°C or less.
- Meat that is cooked, properly cooled, & then later reheated for hot holding & serving shall be reheated so that all parts of the food reach a temperature of at least 74°C for a minimum of 15 seconds.

CAUSES FOR DISQUALIFICATION & EVICTION of a team, its members & guests.

- Excessive use of alcoholic beverages or public intoxication with disturbance.
- Serving alcoholic beverages to the general public.
- Use of illegal controlled substances.
- Foul, abusive, or unacceptable language, or any language causing disturbance.
- Fighting and/or disorderly conduct.
- Theft, dishonesty, cheating, use of prohibited meats, or any act involving moral turpitude.
- Violation of any WSS rules above.

JUDGING PROCEDURES.

- Blind judging only. Entries will be submitted in an approved WSS numbered container provided by the contest organizer.
- Judging will be done by a team of 3 persons.
- Each judge will first score all samples on appearance of the meat. The judge will then score on taste & tenderness, before moving to next entry.
- The score system is whole numbers from 10 to 1. 10 & 9 excellent, 8 very good, 7 above average, 6 average, 5 below average, 4 poor, 3 bad, 2 & 1 inedible.
- Total points per entry will determine the champion within each meat category.

ACKNOWLEDGEMENTS

Thank you to all our **VOLUNTEERS** for their hard work and assistance. You are an essential component of the Show's success.

To all our **SPONSORS** - Your support this year has been amazing. It is really appreciated and vital to the successful staging of this event.



The Wondai Show is proudly supported by the Queensland Government through the Show Societies Grants Program.



Paper and photocopying for this Schedule were kindly donated by **Deb Frecklington, Member for Nanango**. A big thank you to **Deb & her office staff**.



FRRR
Foundation for Rural
Regional Renewal

The Wondai AP & I Society Inc would also like to thank the FRRR - the Foundation for Rural and Regional Renewal for supporting us with a grant which has enabled us to buy more Gazebos, tables, eskys and safety equipment for this year's show.



NEW TO THE SHOW IN 2023

New at the 2023 show is a road around the top of the grounds which will be used cattle, trucks and all traffic to the centre ring. Thankyou to Yesbergs Earthmoving for making this possible and for making the show grounds a safer place, The Dog section also has a new entrance down the Cherbourg road, which will take them straight into the dog area without having to drive through the show grounds. The roads will be well signposted on the day. Our Show & Shine will be to the left of the gate as you come in the show. Everything else is the same as last year.

SECTION 26 LOW N' SLOW COOK OFF CONTINUED

WONDAI SHOW SOCIETY

LOW 'N SLOW COOKING RULES & REGULATIONS

The decision & interpretations of the WSS rules & regulations, are at the discretion of the WSS contest representatives at the contest. Their decisions & interpretations are final to the extent consistent with the rules.

1. Each team shall consist of a chief cook and as many assistants as the chief cook deems necessary. Chief cooks and/or assistant cooks may only cook for their designated team at the contest they are attending.
2. Each team will be assigned a cooking space. Pits, cookers or any other equipment shall not exceed the boundaries of the team's assigned cooking space. All seasoning & cooking of products shall be done within the assigned cooking space.
3. Contestants shall provide all needed equipment, supplies and electricity except as arranged for in advance. Contestants must adhere to all electrical, fire & other codes. A fire extinguisher must be near all cooking devices.
4. It is the responsibility of the contestant to see that the team's assigned cooking space is clean & orderly following the contest. All fires must be put out, pits filled in, (if allowed by the contest organizer), and all equipment moved from site.
5. Fires shall be of wood, wood pellets, or charcoal. Gas or electric heat sources are permitted for cooking or holding. Propane or electric are permitted as fire starters, provided the competition meat is not in/on the cooking device. **Fires shall not be built on the ground.**
6. Competition meat must not leave the contest site. All competition meat must start out raw. No pre-seasoning of meat is allowed. Competition meat not meeting these qualifications shall be disqualified, not allowed to be turned in, not judged & receive no score.
7. Par boiling, sous-vide and/or deep frying competition meat is not allowed. Meat shall not be sculptured, branded or presented in any way to make it identifiable.
8. Any modification of turn in times, or the order the categories will be judged in, must be approved by the WSS office. An entry will be judged only at the time established by the contest organizer. The allowable turn in time will be five (5) minutes before, to five (5) minutes after the posted time.
9. Garnish is optional.. Sauce is optional. If used, it shall be applied directly to the meat & not be pooled or puddled in the container.
10. Entries will be submitted in an approved WSS numbered container provided by the contest organizer. Containers shall not be marked in any way so as to make the container unique or identifiable.

SECTION 25 — LOW AND SLOW COOK OFF continued

Commencement times & turn in times for each event will be advised to entrants once nominations are finalized.

OPEN TO ALL TYPES OF SMOKERS - GAS, ELECTRIC, WOOD ETC

Meat for all events will be provided by the Wondai Show Society, generously donated by Ryans Butchery Wondai.

Supply your own rubs, marinades or flavours for each event.

Please bring your own shade & seating for the day, also appropriate fire extinguisher & sanitizing spray

Gates open at 5am on Saturday morning. Morning briefing and lighting cookers at 5.30am

For further enquiries: **Bryce Pearce 0491 637 182**

Rules are on the following pages.

Gates open at 5am. Morning briefing 5.30am

**EVERYONE PAYS GATE ENTRY FEE.
PASS OUTS WILL BE GIVEN**

SPONSORS

RYAN'S BUTCHERY, WONDAI

WONDAI SHOW SOCIETY

KINGAROY LAUNDROMAT

MV FABRICATIONS

**FOOD AVAILABLE FRIDAY NIGHT & SATURDAY**

**NO NEED TO FEEL HUNGRY
WONDAI SHOW BBQ IS
SPONSORED BY
RYANS BUTCHERY
WONDAI**



**GREAT
STEAK**



**FRIDAY NIGHT
Sausage Sizzle
Steak & Onion Roll**

**SATURDAY
Bacon & Egg Breakfast
Sausage Sizzle
Steak Burger
Assorted Sandwiches**



**Cakes & Slices
Cold Drinks
Tea & Coffee.**



**Also plenty of
Food outlets
in the
Trade Sites**



SECTION 1 - HORSES**CHIEF RING STEWARD: DAVID PITSTOCK Mobile 0427 169 043**Email: secretary@wondaishow.com.au**STARTING TIME: 8.30am SHARP****Rules & Regulations:****ALL EXHIBITORS MUST PAY THE GATE FEE ON ENTRY TO THE GROUNDS.****Stables must be pre booked (Form on website or contact Chief Ring Steward)****The following DEFINITIONS and CONDITIONS shall apply:****PONY - Not exceeding 14 hands****GALLOWAY - Over 14 hands and not exceeding 15 hands****HACK - Over 15 hands****MAIDEN - A horse that has not won a first prize at an****Agricultural show, excluding local & district classes.**

- * In the event of a dispute, the Rules of Queensland Chamber of Agricultural Societies shall apply. A protest must be lodged at the Secretary's Office in writing with a bond of \$100.00 no later than 1 hour after the judging of the event in which the protest is made. Bond will be forfeited if the protest is turned down & refunded if the protest is upheld
- * All competitors compete at own risk.
- * All stallions & colts 1 year & over must be led/ridden by a person 18 years & over.
- * Any prize not claimed at the show is forfeited to the Society
- * Registration certificates & membership cards must be produced on request to the Judge in all classes.
- * The Judge can withhold any prize ribbon when the exhibit is not of sufficient merit .
- * Exhibitors entered in the wrong classes may be transferred to the correct class at the discretion of the Ring Steward.
- * The Society reserves the right to amend the schedule at any time.
- * The Society reserves the right to substitute special prizes which may be donated later for any advertised schedule prizes.

SECTION 25 — LOW AND SLOW COOK OFF**Ryan's Butchery Backyard BBQ Smoke Off**

TEAM NAME: _____

Event	Description	Noms	Prize Money*	Nomination
1.	CHICKEN	\$20	1st \$100 2nd \$75 3rd \$50	
2.	PORK	\$20	1st \$100 2nd \$75 3rd \$50	
3.	BEEF	\$20	1st \$100 2nd \$75 3rd \$50	
4.	RYAN'S MYSTERY TOTAL	\$20	1st \$100 2nd \$75 3rd \$50	
CHAMPION PRIZE & CASH VALUE \$600 RESERVE PRIZE & CASH TO VALUE \$100				

ALL NOMINATIONS MUST BE RECEIVED BY 23rd AUGUST 2023 to :- pearce.site.maintenance@outlook.com
DIRECT DEPOSIT: BSB 633 000 ACC NO 1593 52418
 (Ref Low/Slow & name.)

Nominations limited to first 10 in each event.

Entrants can bring their cooking equipment into showgrounds on the Friday night.

Free camping is available on the grounds for participants. Sorry no powered sites available on Friday & Saturday nights, generators allowed. Prizes of equal or above value can be substituted for prize money.

SECTION 24 - TRUCK SHOW & SHINE continued

**TRUCK SHOW & SHINE
ENTRY FORM
2nd September 2023**



ENTRY FEE \$15 per Truck. Each truck can enter up to 4 classes

Class 1	Best 0—3 Years
Class 2	Best 4—9 Years
Class 3	Best 10—19 Years
Class 4	Best 20—29 Years
Class 5	Best Vintage (30 + Years)
Class 6	Best Local Rig SB Area
Class 7	Best Fleet (3 or more)
Class 8	Best Interior
Class 9.....	No Time for Shine
Class 10.....	Best Bling
Class 11.....	Best Tribute

* **TRUCK OF THE SHOW** \$750

◆ **TRUCK OF THE SHOW RUNNER UP** \$400

◆ **ENCOURAGEMENT AWARD** \$250

Rego Number

Make

Model Year

Name:.....

Phone:..... Email:.....

Address:.....

Entry fee to be paid by 29th August by cheque or transfer
Cheques made out to Wondai A P & I Soc.
P O Box 159, Wondai 4606
Email secretary@wondaishow.com.au
BSB 633 000 Account Number 1593 52418
Reference—Last Name & 'trucks'

**FREE CAMPING FOR ENTRANTS ON SHOW GROUNDS FRIDAY &
SATURDAY NIGHTS—UNPOWERED SITES ONLY GENERATORS**

SECTION 1 - HORSES

- * The Society reserves the right to amend the schedule at any time.
- * District events are restricted to residents of the South Burnett Regional Council area & the Goomeri area.
- * The show hunter classes are supported by the Australian Hunter Horse Association (AHHA). Wondai show 2022 is a AHHA Show National Qualifier. You must be a financial member to compete in the AHHA classes.
- * Horses/ponies & handlers competing in the Restricted Ring may not compete in the Open breed/hack/hunter rings (except in classes as indicated.)
- * All competitors must sign the Indemnity Forms & Horse Health Declarations to enable entry into classes—parents or guardians to sign for competitors under 18 years of age.
- * Ponies may be ridden by adults

Ponies, Galloways & Hacks may be measured Saturday 8-8.30am

**NOTE:- Horses may compete in
EITHER Ridden Show Hack or Ridden Hunter**

**THANK YOU TO RIVERINA STOCKFEEDS
FOR ALL DONATED BAGS OF FEED
AND
THANK YOU TO YEEHAA HAY FARM
FOR ALL DONATED HAY TO OUR CHAMPIONS**

BREED & OPEN CLASSES—RINGS 1, 2 & 4

**ENTRY FEE: \$3.00 per entry
PRIZE MONEY: 1st \$10, 2nd \$5, 3rd \$3**

RESTRICTED RING 3

**ENTRY FEE: \$2.00 per entry
PRIZE MONEY: 1st \$4, 2nd \$3, 3rd \$2**

SECTION 23 - UTE MUSTER

ALL COMPETITORS PAY AT GATE

Chief Steward: Amanda Stevens Phone: 0448 356 029

Entry Fee: First class FREE and \$5 for each additional class

Nominations between 10.30 & 11.30 am Saturday 2nd September

Prize: Trophies & Ribbons to 3 places

Conditions:

- 1) Competitors are permitted to enter competition at any number of local Shows;
- 2) If a competitor wins a class at one Show, they may still compete at other Shows;
- 4) All entrants, spectators and vehicles enter at their own risk.
- 5) No claim in any form shall be made by entrants or by their heirs, successors, executors personal representatives or assigns against the Society or persons associated.
- 6) All vehicles entered must be registered by the Dept of Transport.
- 7) All QLD road rules apply to the entrant whilst in the grounds.
- 8) Excessive noise from person or vehicle, speed, burn-outs, donuts, dangerous driving or driving under the influence or unnecessary movement of vehicle, will NOT be tolerated.
- 9) Offenders will be disqualified & directed to leave without a refund of entry money..
- 10) Management reserves the right to use/publish, any/all photos taken along with the results.
- 11) The judge's decision is final & no correspondence will be entered into.
- 12) All coming through gate will pay gate price.

GARY ANGEL BULK HAULAGE has sponsored this section

Class 1 Best Street Ute

Class 2 Best B & S Ute

Class 3 Best Chicks Ute (Rego papers required)

Class 4 Best 4 x 4 Ute

Class 5 Best Work Ute

Class 6 Judge's Choice 1st place only

Class 7 Themed



SECTION 1 - HORSES continued

HEAVY HORSE - ANY BREED

22. Colt/Stallion 23. Filly/Mare

24. Gelding any age

CHAMPION - SASH & BALE OF HAY YEEHA FARMS RESERVE

CHAMPION - SASH & BALE OF HAY YEEHA FARMS



SUPREME LED OF THE SHOW

\$50 PRIZE donated by CHERYL DUNSTAN

Prize donated by SAP KREATIONS

Garland donated by JILL KEATES

RIDDEN BREED CLASS

25. Ridden Thoroughbred 26. Ridden Standardbred

27. Ridden Any Other Breed 28. Ridden Heavy Horse

RIDDEN SHOW HACK

29. Maiden Hack 30. Novice Hack

31. District Hack 32. Open Hack 15hh ne 16hh

33. Open Hack over 16hh

CHAMPION (CLASSES 29—33)

SASH & BAG PONY PELLETS FROM NORCO KINGAROY

RESERVE CHAMPION - SASH & BALE OF HAY YEEHA

FARMS

RIDDEN SHOW GALLOWAY

34. Maiden Galloway Hack

35. Novice Galloway Hack

36. District Galloway Hack

37. Open Galloway Hack, over 14hh ne 14.2hh

38. Open Galloway Hack, over 14.2hh & not exceeding 15hh

CHAMPION (CLASSES 34—38)

SASH & PONY PELLETS from NORCO KINGAROY

RESERVE CHAMPION—SASH & BALE HAY YEEHA HAY

FARMS

BRIAN KEMP MEMORIAL CHAMPION GALLOWAY HACK

PRIZE donated by Cr KATHY DUFF + sash

SECTION 1 - HORSES continued**RIDDEN SHOW HUNTER HACK**

39. Maiden Hunter Hack 40. Novice Hunter Hack
 41. District Hunter Hack 42. Open Hunter Hack over 15h n/e 16h
 43. Open Hunter Hack over 16h 44. AHHA Show Hunter Hack

CHAMPION SHOW HUNTER HACK (Classes 39—44)**SASH & BAG PONY PELLETS NORCO KINGAROY****RESERVE CHAMPION - SASH & BALE OF HAY YEEHA FARMS****RIDDEN SHOW HUNTER GALLOWAY**

45. Maiden Galloway Hunter 46. Novice Galloway Hunter
 47. District Galloway Hunter 48. Open Galloway Hunter, 14hh ne 14.2hh
 49. Open Galloway Hunter, over 14.2hh ne 15hh
 50. AHHA Show Galloway Hunter

CHAMPION HUNTER GALLOWAY (Classes 45—50)**SASH & BAG PONY PELLETS NORCO KINGAROY****RESERVE CHAMPION - SASH & BALE OF HAY YEEHA FARMS****SUPREME HACK OF SHOW**

\$50 donated by CHERYL DUNSTAN

Prize donated by SP KREATIONS

Garland donated by LES'S HANDYMAN SERVICES

SUPREME HUNTER OF SHOW

\$50 donated by Glenis Miller

Prize donated by SP Kreations

GARLAND donated by LES ' S HANDIMAN SERVICES

ADULT RIDER CLASSES

51. Gent or Lady Rider over 17 years & under 21 years
 52. Gent or Lady Rider 21 years and over

CHAMPION ADULT RIDER**SASH & PONY PELLETS donated by NORCO KINGAROY****RESERVE CHAMPION SASH HAY donated by YEEHAA HAY FARM****HEAVY HORSE WORKING CLASSES**

Open to any heavy horse including not registered. All horses to be driven in long reins, winkers, collar, hames, backband and chains. Slide & swingle bar will be provided

53. Driven in long reins 54. Slide obstacle course
 55. Log snig 56. Pumpkin Snatch

CH WORKING HEAVY HORSE (Classes 53 – 56)**SASH & PONY PELLETS donated by NORCO KINGAROY****RESERVE CHAMPION Sash & Bale of Hay donated by Yee Haa Hay Farms****SECTION 22—SHOW & SHINE continued****7. Best Car/Commercial Modified post 1988****8. Best Commercial Original pre 1988****9. Best Commercial Modified pre 1988****10. Best Hot Rod****11. Best Motor Bike****12. Best 4 x 4 Original**

WINNERS in each of the above categories will be chosen by popular vote.

A VOTERS' LUCKY DRAW will be held.

“CLASSIC TO PLASTIC ALL WELCOME”

WHEEL CHANGE ALLOWED IN ORIGINAL CLASSES
 TROPHY FROM SUPA CHEAP AUTO KINGAROY



SECTION 22. SHOW AND SHINE

This Section is being organised and run by the
GOOMERI CHROME BUMPERS (GCB) Car Club

Enquiries: Margaret Long – 4169 5036

CONDITIONS:

1. All exhibitors pay the Gate Entrance Fee.
2. There will be NO ENTRY FEE to enter the categories.
3. A car/ute can only be entered in ONE category.
4. Vehicles are to be in place by 9.30am.

All trophies organized by GCB Car Club and
sponsored by Wondai AP & I Society Inc

1. Best Car pre 1960
2. Best Australian Produced Car Original pre 1988
3. Best American Produced Car Original pre 1988
4. Best European/Japanese Car Original pre 1988
5. Best Car Modified pre 1988
6. Best Car/Commercial Original post 1988

**SECTION 1 - HORSES continued****HARNESSES CLASSES**

- | | |
|----------------------------|--------------------------------|
| 57. Pony Turnout | 58. Light Horse Turnout |
| 59. Heavy Horse Turnout | 60. Pony in Harness |
| 61. Light Horse in Harness | 63. Lady Whip |
| 64. Gentleman Whip | 65. Junior Whip—17 yrs & Under |

CHAMPION HARNESSES CLASSES 57—65

SASH & PONY PELLETS NORCO KINGAROY

RES CH SASH & BALE HAY donated by YEE HAA HAY FARM

RING 2 - START TIME: 8.30am**WELSH PONIES (Part Welsh included)**

- | | |
|-------------------|----------------|
| 66. Colt/Stallion | 67. Filly/Mare |
|-------------------|----------------|

68. Gelding any age

CHAMPION WELSH— SASH & \$20 WOOROOLIN VET SERVICES
RESERVE CHAMPION - SASH & BALE OF HAY YEEHA FARMS

AUSTRALIAN SADDLE PONY

- | | |
|-------------------|----------------|
| 69. Colt/Stallion | 70. Filly/Mare |
|-------------------|----------------|

71. Gelding any age

CHAMPION ASP SASH & \$20 WOOROOLIN VET SERVICES
RESERVE CHAMPION - SASH & BALE OF HAY YEEHA FARMS

AUSTRALIAN RIDING PONY

- | | |
|-------------------|----------------|
| 72. Colt/Stallion | 73. Filly/Mare |
|-------------------|----------------|

74. Gelding any age

CHAMPION ARP SASH & \$20 WOOROOLIN VET SERVICES
RESERVE CHAMPION - SASH & BALE OF HAY YEEHA FARMS

ARABIANS (Purebreds & Derivatives any height)

- | | |
|-------------------|----------------|
| 75. Colt/Stallion | 76. Filly/Mare |
|-------------------|----------------|

77. Gelding any age

CHAMPION ARABIAN — SASH & \$20 WOOROOLIN VET SERVICES
RESERVE CHAMPION - SASH & BALE OF HAY YEEHA FARMS

ANY OTHER BREED PONY (ne 14hh)

- | | |
|-------------------|----------------|
| 78. Colt/Stallion | 79. Filly/Mare |
|-------------------|----------------|

80. Gelding any age

CHAMPION AOB (ne 14hh) SASH & \$20 WOOROOLIN VET SERVICES
RESERVE CHAMPION - SASH & BALE OF HAY YEEHA FARMS

SUPREME LED OF THE SHOW

\$50 PRIZE donated by CHERYL DUNSTAN

Prize donated by SAP KREATIONS

Garland donated by JILL KEATES

SECTION 21 - CHAINSAW RACING

MAJOR SPONSOR KINGAROY MOWER CENTRE,
THANK YOU ALSO TO OLLIES MOWER SERVICES, SWICKERS, LOWES
PETROLEUM & WEEPING WILLOW BOUTIQUE

Enquiries: Daryl Pearce 0417 684 334 Tamzin Pearce 0418 883 043

Entry form Page 103

	EVENT	EN-TRY	PRIZEMONEY
1	MS 170 Eager Beaver Challenge	\$15	1 st Goods/Prizes value \$200 2 nd \$70 3 rd \$50 4 th \$30
2	Under 125cc Modified Production Speed	\$15.	1 st Goods/Prizes value \$200 2 nd \$70 3 rd \$50 4 th \$30
3	Wal & Leanne Krause John "Sully" O'Sullivan Memorial Stihl 090 Speed Race	\$15.	1 st \$100, Jacket & engraved glass tankard 2 nd \$70 3 rd \$50 4 th \$30
4	Disc Stacking Under 78cc Modified Production	\$15	1 st Goods/Prizes value \$200 2 nd \$70 3 rd \$50 4 th \$30
5	"Outlaw" Open Post Rip (Open to any saw class)	\$20	1 st Goods/Prizes value \$200 + Jacket, 2 nd \$120 3 rd \$80 4 th \$50
6	"Stihl 090" Jack & Jill Post Rip	\$15 per team	Prize money per team 1 st \$150 2 nd \$120 3 rd \$80 4 th \$50
7	Hot Saw (under 200cc)	\$15	1 st Goods/Prizes value \$200 2 nd \$70 3 rd \$50 4 th \$30
8	Wondai Challenge 2023 Stihl v Husqvana 4 fastest cutters of each saw brand from 'Outlaw Post Rip' to compete in teams post rip.	NA	Team T Shirts supplied by Kingaroy Mower Centre & Ollies Mower Service
Annette & Lindsay Akers Perpetual Points Trophy			

SECTION 1 - HORSES continued**JUNIOR RIDER CLASS**

99. Boy or Girl Rider 8 yrs & under

100. Boy or Girl Rider 9 yrs to 11yrs

CHAMPION & RESERVE CHAMPION SASH & TROPHY

INTERMEDIATE RIDER CLASS

101. Boy or Girl Rider 12 yrs—14yrs

102. Boy or Girl Rider 15 yrs—16yrs

CHAMPION & RESERVE CHAMPION SASH & TROPHY

**CHAMPION RIDER 16 yrs & Under
\$25, SASH & TROPHY
donated by ROS HEIT**

RING 3—START TIME 8.30 AM

RESTRICTED CLASSES (IN THE ENCLOSED SAND ARENA)

ENTRY : \$2 per entry PRIZE MONEY - 1st: \$4; 2nd: \$3; 3rd: \$2

LED CLASSES

103. Best presented Horse/Pony - Handler under 8 . Horse to be led

104. Best presented Horse/Pony - Handler 8 & over. Horse to be led

105. Led Pony

106. Led Galloway/Hack, over 14hh

RIDDEN CLASSES

107. Maiden Pony Hack/Hunter

108. Maiden Galloway Hack

109. Maiden Hack/Hunter

110. Novice Pony Hack/Hunter

111. Novice Galloway Hack/Hunter

112. Novice Hack/Hunter

113. Open Pony Hack/Hunter

114. Open G'way Hack/Hunter

115. Open Hack/Hunter

**CHAMPION & RESERVE CHAMPION PONY, GALLOWAY OR
HACK (Classes 107—115)**

**CHAMPION TROPHY donated by DEB FRECKLINGTON MP
SASH & BAG OF HORSE FEED
donated by RIVERINA STOCK FEEDS**

**RESERVE CHAMPION— SASH & BAG OF HORSE FEED
donated by RIVERINA STOCK FEEDS**

SECTION 1 - HORSES continued**RIDER CLASSES**

- 116. Rider any age - to be led
- 117. Rider under 8 years
- 118. Rider 8 years & under 12 years
- 119. Rider 12 years & under 16 years
- 120. Rider 16 years & over

**CHAMPION & RESERVE CHAMPION
LADY, GENT, GIRL OR BOY RIDER (Classes 116 - 120)**

**CHAMPION TROPHY & SASH
donated by DEB FRECKLINGTON MP
Bag of Horse Feed donated by
Riverina Stock Feed**

BEV PICKELS ENCOURAGEMENT AWARD

**\$25 PRIZE & TROPHY
donated by KATHY DUFF
To be chosen by the Judge
for the most improved handler/rider.**

**SECTION 20 SCHOOLS COMPETITION**

CHIEF STEWARD: DENNIS MORRIS

0427 685 394

Entry free

1st Prize \$100, 2nd Prize \$75 3rd Prize \$50

Open to schools in Wondai, Tingoora, Crawford,
Wooroolin, Wheatlands & Moffatdale

Theme for this year's competition:- '120 Years of
Passenger Rail in Wondai.'



Area of display approximately 3metres frontage as
per photo below



SECTION 19 SCARECROW COMPETITION

**Wondai AP&I Show Society
Scare Crow Nomination Form**

**1st Prize \$250
2nd Prize \$150
3rd Prize \$100**

**Donated to your school P&C on behalf of
the Wondai Show Society**

Scare Crow's Name-.....
School.....
Email.....
Staff Member to contact

Inspiration

.....

.....

.....

Ages of children involved

.....

Material used

.....

.....

.....

1 Entry per school. Entries must be delivered to Wondai Showgrounds Pavilion. Latest Entrant by 12 noon on 31st August . Please make sure Scarecrows are ready to be judged. Judging will take place on 1st September. Winners will be contacted. For all enquiries, please contact secretary@wondaishow.com.au.

SECTION 1 - HORSES continued

RING 4—STARTS 8.30 am

Miniature, Small, Little Horses and Ponies

To be judged under the guidelines and rules of the Australian Miniature Horse and Pony Registry

Entry Fee - \$3.00 First - \$10.00, Second - \$5.00, Third - \$2.00

LED CLASSES

MINIATURE HORSE

- 124. Filly 2 yrs and under
- 125. Mare/Filly 3 yrs & over
- 126. Colt/Stallion any age

**CHAMPION MINIATURE HORSE - Sash, Rosette & bale of Hay
RESERVE CHAMPION - Sash & bale of Hay**

SMALL/LITTLE HORSE

- 127. Gelding 2 years and under
- 128. Gelding 3 years & over
- 129. Filly 2 years and under
- 130. Mare/Filly 3 yrs & over
- 131. Colt/Stallion any age

**CHAMPION SMALL HORSE- Sash, Rosette & bale of Hay
RESERVE CHAMPION - Sash & bale of Hay**

MINIATURE/SMALL PONY

- 132..Gelding 2 years & under
- 133. Gelding 3 years & over
- 134. Filly 2 years and under
- 135. Mare/Filly 3 yrs & over
- 136. Colt/Stallion any age

**CHAMPION MINIATURE /SMALL PONY -
Sash, Rosette & bale of Hay
RESERVE CHAMPION - Sash & bale of Hay**

SHETLAND PONY. Mare/Filly any age

- 137. Geldinga any age
- 138 Mare/Filly any age
- 139. Colt/Stallion any age

**CHAMPION SHETLAND PONY - -Sash, Rosette & bale of Hay
RESERVE CHAMPION - - Sash & bale of Hay**

SECTION 1 - HORSES continued

**SUPREME CHAMPION
MINIATURE/SMALL/LITTLE HORSE OF SHOW**
\$25 donated by WATERVIEW PARK MINIATURES
SASH, RUG & GARLAND

**SUPREME CHAMPION MINIATURE/ SMALL/
SHETLAND PONY OF THE SHOW**
\$25 donated by WATERVIEW PARK MINIATURES
SASH, RUG & GARLAND

**SPECIAL NEEDS CLASSES—
PRIZE MONEY DONATED BY PAULINE KEATES**

140. Best Presented Horse/Pony/Handler
141. Led Horse/Pony
143. Trail
142. Best Classic Trot
144. Hunter

**CHAMPION SPECIAL NEEDS AWARD
TROPHY** donated by WATERVIEW PARK MINIATURES
SASH, BALE OF HAY & GARLAND

RESERVE CHAMPION
SASH, ROSETTE & BALE OF HAY
All other competitors - Rosette

NOVELTY CLASSES

145. Best Classic Head Miniature/Small/Little Horse
146. Best Classic Head Miniature/Small/Pony
147. Best Mane and Tail Miniature/Small/Little Horse or Pony
148. Best Colour Miniature/Small/Little Horse or Pony
149. Best Classic Trot Miniature Horse
150. Best Classic Trot Small/Little Horse
151. Best Classic Trot Miniature /Small Pony
152. Owners Group of 2 Miniature/Small/Little Horses or Ponies
153. Best Matched Pair

SECTION 19 SCARECROW COMPETITION

Wondai Show 2023

Presents



**WE ARE ASKING ALL SCHOOLS TO GET INVOLVED IN THIS
GREAT COMPETITION....**

**THIS YEARS THEME-
120 YEARS OF THE WONDAI TRAIN**



1st Prize- \$ 250
2nd Prize- \$150
3rd Prize- \$100
**All money will be donated
to your schools P&C on
behalf of the
Wondai AP&I Society**

1 entry per school.
**Entries must be
delivered to the Wondai
Showgrounds by 12pm
by the 31st August ready
to be judged on the 1st
Sept. Winners will be
contacted.**

**ALL SCARECROWS WILL BE USED TO DECORATE AND PLACED ON
DISPLAY IN THE WONDAI SHOW PAVILION, SO BRING THE KIDS
ALONG TO SEE THEIR WONDERFUL CREATIONS!**

For all enquiries please contact
secretary@wondaishow.com.au

SECTION 18 LEGO/DUPLO**STEWARDS:** Felicity Jorgensen Ph: 0437 107 272**CONDITIONS:**

1. Please note General Pavilion rules (Page 56) especially regarding entry procedures (Points 3 - 6).
2. Exhibitor's age to be taken as of the 1st May in current year.
3. The exhibit entered is to be an original design or creation and must not be a design or copy from instructions on boxes or sets.
4. Exhibits **MUST** be on a solid base and no larger than 30cm x 60 cm

ENTRY IS FREE**PRIZES IN THIS SECTION DONATED BY KINGAROY TOY WORLD**

Judged on relevance to given theme, creativity, originality, design, skill and technique.

Theme: 120 Years since the first passenger train arrived in Wondai— can include historic railway or current for the rail trail or station

1. 6 and under
- 2: 7 - 9 years
- 3: 10 - 12 years
- 4: 13 - 15 years
- 5: Open (16+ years of age)



THANKS TO OUR PAVILION SPONSORS

GENTECH SEEDS, LOWES PETROLEUM
WONDAI PHARMACY WONDAI TRADERS
UNICORN SPECIALTY FOODS
DIMITIES COTTAGE WONDAI NEWS
WONDAI GARDEN CLUB GOOMERI EMPORIUM
SOUTH BURNETT ORCHID CLUB
WONDAI WOODCRAFTERS WOOROLIN FABRICS
SOMETHINGS COUNTRY
BBQs GALORE BUNDABERG
WONDAI REGIONAL ART GALLERY
KINGAROY TOY WORLD

SECTION 1 - HORSES continued

PERFORMANCE - Points will be allocated for each horse's workout in classes 152 to 165, which will be totalled at the finish of the performance for the Championship & place getters of each age group. Prize money for the Performance Classes donated by Heatherdoon Miniatures Wondai.

154. Youth Trail - 12 years and under
155. Youth Trail - 13 years to 17 years
156. Youth Hunter – 12 years and under
157. Youth Hunter—13 years to 17 years
158. Open Trail - Miniature/Small/Little Horse 2yrs & Under
159. Open Trail - Miniature/Small/Little Horse 3yrs & Over
160. Open Trail - Miniature/Small/Pony 2yrs & Under
161. Open Trail - Miniature/Small/Pony 3yrs & Over
162. Open Hunter - Miniature/Small/Little Horse 2yrs & Under
163. Open Hunter - Miniature/Small/Little Horse 3yrs & Over
164. Open Hunter - Miniature/Small/Pony 2yrs & Under
165. Open Hunter - Miniature/Small/Pony 3yrs & Over

**CHAMPION PERFORMANCE 12 YEARS AND UNDER -
Sash, Trophy and a Bale of Hay**

RESERVE CHAMPION – Sash & Bale of Hay

CHAMPION PERFORMANCE 13 Years to 17 Years -

Sash Trophy and a Bale of Hay

RESERVE CHAMPION – Sash & Bale of Hay

**CH. PERFORMANCE Miniature/Small/Little Horse 2yrs & Under
- Sash, Trophy and a Bale of Hay**

RESERVE CHAMPION – Sash & Bale of Hay

**CH. PERFORMANCE Miniature/Small/Little Horse 3yrs & Over
Sash and a Bale of Hay**

RESERVE CHAMPION – Sash & Bale of Hay

**CH. PERFORMANCE Miniature/Small/Pony 2yrs & Under
- Sash, Trophy and a Bale of Hay**

RESERVE CHAMPION – Sash & Bale of Hay

**CH. PERFORMANCE Miniature/Small/Pony 3yrs & Over
* Sash, Trophy and a Bale of Hay**

RESERVE CHAMPION – Sash & Bale of Hay

SECTION 1 HORSES continued

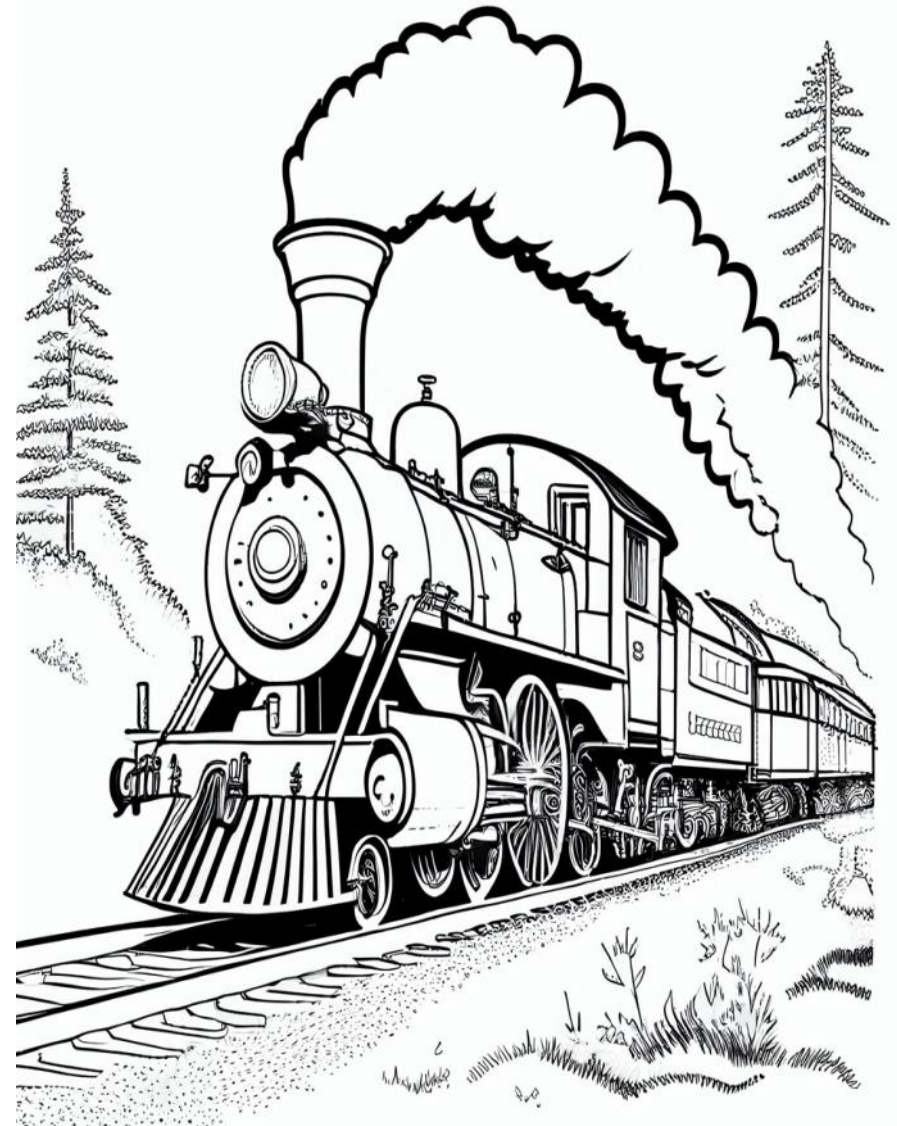
166. Show Jumping - 17 years & under
 167. Show Jumping - 18 years & over
 168. Fault & Out – 17 years & under
 169. Fault & Out - 18 years & over



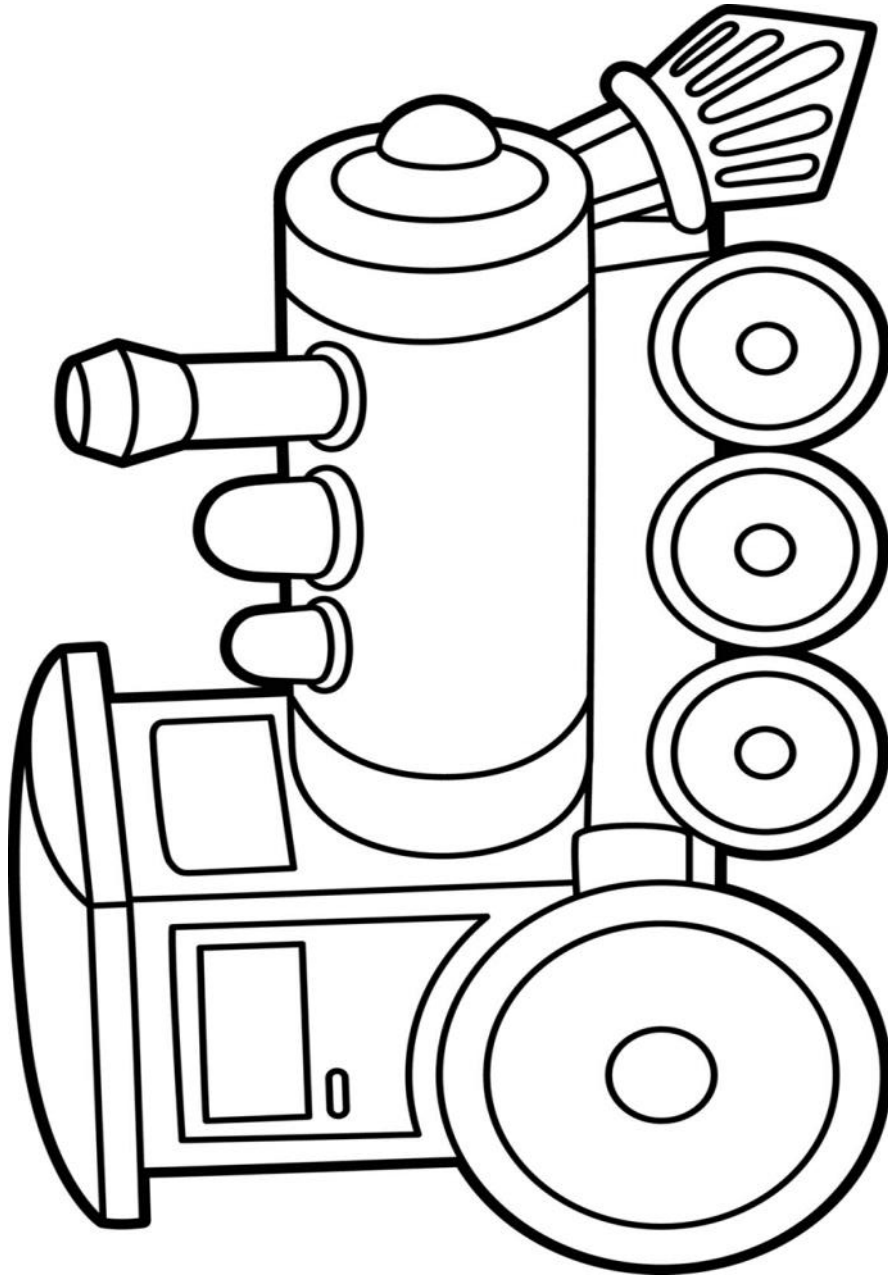
CHAMPION SHOWJUMPER 17 Yrs & U - Sash, Trophy & Bale Hay
RESERVE CHAMPION – Sash & Bale of Hay

CHAMPION SHOWJUMPER 18 Yrs & OVER - Sash, Trophy & Bale Hay
RESERVE CHAMPION – Sash & Bale of Hay

ALL GARLANDS, ROSETTES AND PRIZE MONEY DONATED BY
JILL KEATES, HEATHERDOON MINIATURES, WONDAL QLD
Prize Money for both Supreme Horse & Supreme Pony, and
Trophy for Special Needs Champion donated by Max & Cheryl
McCormick WATERVIEW PARK MINIATURES. Prize Money for
Special Needs Classes donated by Pauline Keates
All Hay donated by YEE HAA Farm. G & A Palmer
All bags of feed donated by
RIVERINA KINGAROY & NORCO KINGAROY

**SECTION 17 CLASS 2 YRS 4—6**

PLEASE PUT NAME, AGE, SCHOOL AND YEAR ON
BACK OF THE PICTURE.
Please ensure the pictures are either at Wondal News or the
Show Office by 12noon on Wednesday 30th August 2023



PLEASE PUT NAME, AGE, SCHOOL & YEAR ON BACK OF PAGE.
Please ensure the pictures are either at Wondai News or the

SPONSORS FOR HORSE SECTION

WONDAI AP & I SOCIETY INC would like to thank:-
YeeHaa Hay Farm (G & A Palmer), Riverina Stock Feed. Kewpie Stock Feed, Barambah Business Services, Deb Frecklington MP, Ros Heit, Cr Kathy Duff, Cheryl Dunstan, Glenis Miller, Waterview Park Miniatures, Heatherdoon Stud Wondai, Pauline Keates Les's Handiman Services, SAP Kreations, Hitchley & Harrow, Norco Kingaroy, Wooroolin Vet Services for their sponsorship.



SECTION 2 - DAIRY CATTLE

**SOUTH BURNETT SUB-CHAMBER OF
AGRICULTURAL SOCIETIES**

2023 AGGREGATE POINTS DAIRY CATTLE

1st \$200, 2nd \$100, 3rd \$50

Sponsored by BURNETT WATER SERVICES

For Exhibitors at any 2023 South Burnett Show listing a Dairy Section

Points are awarded for the **Best 5** exhibits at each show.

1st 5 points, 2nd 4 points, 3rd 3 points, 4th 2 points, 5th 1 point

**Winner: Exhibitor gaining most points across all shows,
announced after judging at the Wondai Show**

TICK STATUS – The DPI advises:

Tick Free – please confirm tick status before moving cattle

Infected zone – cattle to be inspected by an accredited
Certifier

At risk – owners have own obligation to ensure no bio security risk is
posed by moving cattle. All enquiries DPI Kingaroy 4182 1800

CHIEF STEWARD: JOANNE EVANS -

PH: 4168 5515 or 0400 406 634

ALL COMPETITORS MUST PAY ENTRY FEE AT GATE.

Judging Starts 8.30am Saturday. Cows in milk judged first.

**All Prize winners must participate in Grand Parade at
12.30pm**

CONDITIONS OF ENTRY:

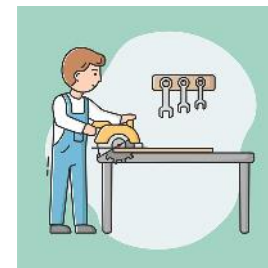
- Age of Cattle will be taken from the day of Show.
- All exhibits in purebred classes must be registered or eligible for registration.
- Livestock must be the property of the exhibitor, one month before Show date.
- Dairy Cattle are to be from EBL free accredited herds or shown negative test prior to the Show.
- All cattle must be fitted with a NLIS device.
- **Entries must be received by the Show Secretary /Chief Steward by 5pm Monday 28th August 2023, PO Box 159, Wondai or Email to secretary @wondaishow.com.au**



SECTION 16—WOODCRAFT continued

17. Veneered item (including marquetry or laminated).

**ENCOURAGEMENT AWARD
BEST JUVENILE EXHIBIT
BEST NOVICE EXHIBIT
RESERVE CHAMPION EXHIBIT
GRAND CHAMPION**



SECTION 16 - WOODCRAFT**SECTION 16 - WOODCRAFT****CHIEF STEWARD: David Olm 0467 964 264****CONDITIONS**

1. Please note **General Pavilion Regulations (Page 53)**, especially regarding **entry procedures (Points 3 - 6)**.
2. If the judge considers an exhibit not of sufficient merit, no award made
3. All entries to be the bona fide work of the exhibitor.
4. **NO ENTRY FEE.** Prize money, ribbons & place cards for 1st 2nd 3rd.
5. No MDF (medium density fibreboard) accepted in any section.
6. Judging at 11am Friday 1st September 2023

CLASSES

1. Best turned bowl.
2. Best platter.
3. Best lidded item. Turned or unturned eg small lidded box
4. Best turned vase.
5. Best spindle turned item.
6. Carved article - relief
7. Carved article – in the round
8. Scroll or fretsaw work
9. Pyrography (must be on timber)
10. Wood combination with other medium.
11. Furniture item
12. Toys/models
13. Novelty item
14. Exhibit produced by Primary School student
15. Exhibit produced by Secondary School student
16. Best timber pen or pencil – 1 item per entry.

**SECTION 2 - DAIRY CATTLE continued**

COVERED CATTLE STALLS LIMITED—NEED TO BOOK EARLY
ENTRY FEE FOR ALL CLASSES—\$3.00

PRIZE MONEY—COWS**1st \$15.00; 2nd: \$8.00; 3rd: \$4.00**

1. Cow: 3 years and under 4 years in milk
2. Cow: 4 years and under 5 years in milk
3. Cow: 5 years and over in milk
4. Cow: 5 years and over, dry
5. Cow: 3 years and under 5 years, dry.



CHAMPION & RESERVE CHAMPION COW
OVER 3 YEARS

Champion - 3 bags Dairy Meal**Reserve Champion - 2 bags Dairy Meal****HEIFERS****1st: \$12; 2nd: \$5.00, 3rd: \$3.00**

6. Heifer: 2 1/2 years and under 3 years in milk
7. Heifer: 2 years and under 2 1/2 years in milk
8. Heifer: Under 2 years in milk
9. Heifer: 2 1/2 years and under 3 years, dry
10. Heifer: 2 years and under 2 1/2 years dry

**CHAMPION AND RESERVE CHAMPION HEIFER UNDER 3 YEARS**

CLARRIE MARQUARDT OAM MEMORIAL SHIELD
for CHAMPION HEIFER

Winner's name inscribed on Perpetual Shield**Champion - \$100 & TROPHY donated by BEGA CHEESE****Bale of Hay donated by Gordon Family****Reserve Champion - 2 bags Dairy Meal**

SECTION 2 - DAIRY CATTLE continued**JUVENILE FEMALES****1st: \$12; 2nd: \$4.00; 3rd: \$2.00**

11. Heifer: 18 months and under 2 years, dry
12. Heifer: 12 months and under 18 months, dry
13. Heifer: under 12 months, dry

CHAMPION & RESERVE CHAMPION JUVENILE UNDER 2 YEARS

JIM & JAMES ENGLISH MEMORIAL TROPHY
for Champion Juvenile Female
 Winner's name inscribed on Perpetual Trophy

CHAMPION \$100 & TROPHY donated by Bega Cheese
Lucerne Hay donated by the Gordon Family
Reserve Champion - 2 bags Dairy Meal

JOHN EVANS MEMORIAL SHIELD
for Supreme Champion Female
 Winner's name inscribed on Perpetual Trophy

SUPREME CHAMPION—\$250.00
 Donated by **JOANNE EVANS & FAMILY**
Bale of Lucerne donated by the Gordon Family

14. Bull, any age **1st : \$10.00; 2nd: \$5.00; 3rd: \$3.00**
15. Cow or Heifer: Best Udder Attachment
1st: \$15 & Bale Hay; 2nd: \$5.00; 3rd: \$3.00
16. Pen: 2 cows 3 years and over
1st: \$15 & Bale Hay; 2nd: \$5.00; 3rd: \$3.00
17. Pen: 2 Heifers under 3 years
1st: \$15 & Bale Hay; 2nd: \$5.00; 3rd: \$3.00

**SECTION 20- COLLECTORS CORNER**

15. 4 Salt & Pepper Sets
16. 6 Souvenir Teaspoons
17. Vintage Cards, Birthday, Poster etc 4 items
18. Collection of Old Buttons 6 items
19. Doll Collection 4 items (All one size or mixed)
20. Teddy Collection 4 items (All one size or mixed)
21. Militaria Collection 4 items

Juvenile – entry free

22. Dolls – Barbie or similar 2 items
23. Toy Animals – small - farmyard, zoo, dinosaur etc 6 items (All one type or mixed)
24. Australian Coins 4 items
25. Rocks, Minerals, Fossils 4 items (All one type or mixed)
26. 6 Feathers
27. Small toys – Cars, Trucks, Trains, Tractors, Motor bikes etc. 4 items (All one type or mixed)
28. 4 Sea Shells.



THIS SECTION SPONSORED
BY WONDAI TRADERS



SECTION 15 - COLLECTORS CORNER

Chief Steward: Brian Labudda 0400 625 366

Entry Fee \$1.00 Prize Money: 1st \$4.00 2nd \$2.00 . Where trophy is awarded to winner, no prize money is awarded for 1st Prize

Conditions:

- All exhibits must be delivered to Stewards at the Showground Pavilion with entry cards attached, no later than 9am on Friday 26th August 2022
- Space allowed for each exhibit – one square metre.
- One exhibit per class
- Exhibits may not be entered in more than one class.
- Exhibits must remain on display until 4pm on show day, when Stewards will be in attendance for the removal of same.
- No responsibility will be taken for exhibits not collected by 4pm unless prior arrangement is made with the Steward or Secretary.
- Prize money will be available after 4pm show day .
- Judging will be by representatives of ‘Arms & Militia Press’
- Items will be judged on:
 - *Rarity *Condition & Originality *Presentation Method
 - *Correctness of Identification

Maximum 10 points for each

A \$10 judge’s choice and an encouragement award will be awarded in both Open & Juvenile Sections.

1. One Interesting or Unusual Tool
2. 4 Hat Pins
3. Old Signs – One large or two small
4. 4 Die Cast Models – car, truck, tractor, motor bike or train (all one type or mixed)
5. 4 Cups & Saucers (Pairs or trios)
6. 4 Old Record Covers
7. Unusual Ornament – any medium
8. 6 Australian Coins
9. 6 Collectors Cards
10. 4 Rocks, Minerals or Fossils (all one type or mixed)
11. 2 Teapots
12. 4 Old Tins- Biscuit, Sweets, Tobacco etc .
(All one type or mixed)
13. 4 Frog Ornaments
14. 4 Horse Ornaments



SECTION 2 - DAIRY continued

18. Sire Progeny Stakes: 2 Females
1st: 2 bags Dairy Meal; 2nd: \$5.00; 3rd: \$3.00
19. Pen: 2 daughters of 1 dam or dam & daughter or maternally related
1st: 2 bags Dairy Meal; 2nd: \$5.00; 3rd: \$3.00
20. Breeders Group: 4 Females, any age
1st: 2 bags Dairy Meal; 2nd: 1 bag Dairy Meal;
3rd: \$3.00
21. Exhibitors Group: 2 Cows 3 yrs & over, 2 Heifers under 3yrs
1st: KEWPIE Voucher 4 x bags Stock Feed;
2nd: 2 bags Dairy Meal; 3rd: 1 bag Dairy Meal
22. Parade of 10 Dairy Cattle for Top 5 Exhibits of Show
(Points count towards 2023 South Burnett Sub Chamber Aggregate Points Dairy Cattle - See page 33 for details
1st Prize: 2 bags Dairy Meal

**MRS A V SMITH MEMORIAL TROPHY
MOST SUCCESSFUL EXHIBITOR
DAIRY SECTION 1st tub of Anipro donated by
Performance Feeds
2 bales Lucerne donated by Gordon Family
Winner’s name on Perpetual Trophy**

Anipro
Liquid Supplements



SECTION 2 - DAIRY continued

23. **YOUNG JUDGES** (Aged 15 years and under 25 years as of 1st May **2023**)

24. **YOUNG HANDLERS** (Aged 15 years and under 25 years as of 1st May **2023**)

(Classes for younger competitors may be held at the discretion of the Chief Steward)

Young Judges & Handlers: 1st: \$15; 2nd: \$10; 3rd: \$5 plus medallions -

**Winners of Classes 23 & 24 are eligible for
2024 SOUTH BURNETT SUB CHAMBER FINALS**

SPONSORS OF DAIRY SECTION**BEGA CHEESE****KEWPIE STOCKFEEDS****PERFORMANCE FEEDS — ANIPRO****RIVERINA STOCK FEEDS****GOLDMIX STOCK FEEDS****THE GORDON FAMILY HAY****THE EVANS FAMILY****YEE HAA HAY FARM**

Anipro
Liquid Supplements

**SECTION 14 - FINE ARTS continued****JUNIOR DIVISION**

FREE ENTRY PRIZE MONEY - 1st: \$4.00; 2nd: \$2.00

Points in this Division (1st - 2 points; 2nd - 1 point) count towards the Barbeques Galore Trophy

All Junior Entries must be NO larger than A4. All entries need to be presented on A4 paper for Class 9 and paper or card for Classes 10 & 11. No canvases are to be submitted

9. Pre-school to Grade 3—any medium, Poster A4 paper
10. Grades 4—7, any medium, Poster A4 paper or card
11. Grades 8—10, any medium, Poster A4 or card

BEST EXHIBIT IN EACH CLASS 7 - 9

PRIZE donated by: WONDAL REGIONAL ART GALLERY



SECTION 14 - FINE ARTS

CHIEF STEWARD: CASEY DAVIE 0417 636 272

CONDITIONS

1. All work must be true bona fide work of the exhibitor and less than 2 years old. Exhibits having previously won a prize at a Wondai Show may not compete.
2. Exhibits may be collected after 4.30 pm Saturday 2nd Sept 2023, under Steward's supervision. Exhibitors must pay at gate on Saturday to enter showgrounds to collect exhibits.
3. All paintings to be suitably framed and wired for hanging. Drawings should be framed where possible, or mounted attractively.
4. If the Judge considers an exhibit not of sufficient merit no award will be made.
5. Where a prize/voucher is awarded no prize money to be given.
6. **ENTRIES CLOSE 12.00 NOON MONDAY 29th AUGUST 2023. No late entries will be accepted.**
7. **Entries may be left at the Wondai Art Gallery no later than 11am 29.08.23 or at the Show Office**

OPEN DIVISION

ENTRY FEE: 60 cents per entry

PRIZE MONEY - 1st: \$5.00; 2nd: \$2.00

1. Landscape, any medium
2. Animal or Bird wildlife, any medium
3. Portraits and Figures, any medium
4. Water scene (coastal or inland), any medium
5. Abstract, any medium
6. Still Life, any medium
7. Pottery, wheel or hand built
8. Ceramics & sculpture

CHAMPION EXHIBIT OPEN DIVISION Classes 1 – 8

TROPHY donated by WONDAI REGIONAL ART GALLERY

SECTION 3 - STUD BEEF Conditions of Entry

CHIEF STEWARD: ANDREW PERKINS - PH: 0418 745 412

SECTION COORDINATOR: VAL WICKS - PH:07 4168 5668

Free Camping Friday & Saturday nights for participants — unpowered sites only, generators allowed. ALL MUST PAY GATE FEE. PASS OUTS GIVEN

TICK STATUS – The DPI advises:

Tick Free – ALL CATTLE MUST BE TICK FREE. Please confirm tick status before moving cattle

Infected zone – cattle to be inspected by an accredited Certifier

At risk – owners have own obligation to ensure no bio security risk is posed by moving cattle

All inquiries: Kingaroy DPI – Ph: 4182 1800

PLEASE NOTE GATE ENTRY IS NOT INCLUDED IN CLASS ENTRY FEE.

ALL COMPETITORS MUST PAY AT GATE.

CONDITIONS OF ENTRY:

1. All cattle must be fitted with a NLIS device. Scanning will be conducted on Friday 1st September & Saturday 2nd September, prior to the commencement of Judging.
2. All exhibits must be bona fide property of the exhibitor.
3. Age of cattle taken from 1st day of the month of the affiliated Show. (i.e. 01/09/2023)
4. All bovine over four (4) months of age must have a nose grip and all bulls over 12 months must have a nose ring. An exhibitor or representative **MUST** be in charge of all stock at all times.
5. **All exhibitors must have Public Liability Insurance and to have same endorsed for travelling to the Show. Must provide documentation with nominations**
6. Stewards have the right to remove any animal from the ring if that animal is a danger to the safety of other handlers, members of the public & other animals.
7. Entries to compete in one Class only, except Group Classes.
8. Judging will be conducted in three (3) categories as follows:
1 - Tropical 2 - European 3 - British
9. Two (2) Judging Rings operating as directed by the Chief Steward

SECTION 3 - STUD BEEF (Conditions of Entry cont.)

10. Judging in each ring will be in the order set in the Schedule, unless changed at direction of Chief Steward
11. **All entries to be received by 5.00 pm Monday 28th August.** Only entries completed using the **Official STUD BEEF ENTRY FORM** will be accepted. Entry forms may be downloaded from: **www.wondaishow.com** or **www.queenslandshows.com.au** and are available on request from the Section Coordinator, Chief Steward or Show Secretary. Entries may be mailed to:
Wondai Show Stud Beef Coordinator
P O Box 159, WONDAI QLD 4606
 or emailed: **secretary@wondaishow.com.au**
PLEASE NOTE: Late fee of \$4 per head will be applied to late entries.
12. **Inside cattle stalls** can be **booked**, whilst still available if nominations are put in on time and paid in full through Beef Co-ordinator Val Wicks.
13. All Champions and Reserves are required for judging of the Supreme Champion and Top 5 Exhibits.
14. Led Steers/Heifers to be weighed at 7am morning of the show (02/09/2023)
15. **Young Judges and Young Handlers judging** starts at 5 pm Friday 1st September 2023. Classes 1 & 2 judged before the Young Judges etc. All other judging starts at 8.30 am Saturday 2nd September 2023 and will be concluded prior to the Grand Parade at 12.30pm
16. QCAS Rules must be followed.
17. Calves on cows must be 8 months and under.
18. All cattle are to remain on grounds until the Grand Parade is complete. If an exemption is required, it must be sought from the Chief Steward.

**All exhibitors must pay the Gate Fee
on entry to the Grounds**

SECTION 13—PHOTOGRAPHY continued

The following class is for **ADVANCED PHOTOGRAPHERS – who derive income from their photography; photos that have won a 1st prize in the Open Division may also be entered in this Class .**

15. Three (3) related photos (eg different stages or angles) - subject of own choosing; fantasy/digitally altered photos are allowable. The 3 photos are to be mounted on one backing sheet.

16. Black & White Film

ENLARGEMENTS

17. Portrait/Wedding

18. Nature

1st: \$10.00; 2nd: \$5.00; 3rd: \$2.00

DIVISION B: JUNIORS (A)12 years and under) or (B) 13-17 yrs - FREE ENTRY

Photos are to be digitally unaltered .
Points in this Division (1st - 2 points; 2nd - 1 point) count towards the Barbeques Galore Trophy



19. Fur, Flight, Reptile and Aquatic

20. People at work

21. Blue

**BEST EXHIBIT JUNIOR DIVISION
TROPHY donated by WONDAI PHARMACY**



SECTION 13—PHOTOGRAPHY continued

ENTRY FEE: 50 CENTS PER ENTRY

PRIZE MONEY - 1st: \$4.00; 2nd: \$2.00 (unless otherwise stated)

DIVISION A - OPEN (for AMATEUR PHOTOGRAPHERS - who do not derive income from their photography)

Classes are for **digitally unaltered photos** unless otherwise stated.

- | | |
|--|-----------------------------------|
| 1. Water in Nature | 2. Nature a Frame within a Frame |
| 3. Sunrise or Sunset | 4. Gardens |
| 5. Action | 6. Fur, Flight, Reptile & Aquatic |
| 7. Portrait | 8. South Burnett, historic. |
| 9. Broken | 10 Macro |
| 11. Five O'clock Somewhere (People's Choice) | |

ENLARGEMENTS

- | | |
|------------|-----------|
| 12. People | 13. Other |
|------------|-----------|

**CHAMPION PRINT—DIVISION A Classes 1 - 13
TROPHY donated by WONDAI PHARMACY**



The following class is for **fantasy/digitally altered photos** unless otherwise stated. The original photo as well as the altered photo need to be shown.

14. Subject of own choosing

**EXHIBITOR WITH MOST POINTS DIVISION A (Classes 1 - 14)
TROPHY donated by WONDAI PHARMACY**

**SECTION 3 - STUD BEEF continued****SOUTH BURNETT SUB-CHAMBER COMPETITIONS**

**KEN MILLS TOYOTA
STUD BEEF
2023 AGGREGATE POINTS
COMPETITION**

1ST: \$500 2ND: \$300 3RD: \$200

For exhibitors at 2023 South Burnett Shows
Points are awarded for the 'Best 5 Exhibits' at each Show

**1st: 5 points, 2nd: 4 points, 3rd: 3 points,
4th: 2 points, 5th: 1 point**

Winner: Exhibitor gaining most points across all South Burnett shows to be announced after the Wondai Show judging

Exhibitor gaining the most points in this class at each 2023 South Burnett Show also receives \$100 from Ken Mills

GoldMix

LED STEER**2023 AGGREGATE POINTS COMPETITION**

1ST: \$200 2ND: \$100 3RD: \$50

Points are awarded at each 2023 South Burnett Show

**1st - 5 points 2nd - 4 points 3rd - 3 points
4th - 2 points 5th - 1 point**

Winner: Exhibitor gaining most points across all shows, announced after the Wondai Show judging

SECTION 3 - STUD BEEF continued

**FRIDAY 1st September 2023
YOUNG JUDGES and YOUNG HANDLERS,
SCHOOLS & CALF CLASSES 1 & 2**

BBQ operating 5.00pm - 7.30pm as required, free sausage on bread & soft drink/water for competitors donated by Graeme & Val Wicks. For catering purposes please put on entry form the approx. number of students attending. There will be a BBQ and drinks on sale for other competitors

COMPETITION STARTS AT 5.00pm SHARP

NOTE: It would be appreciated if exhibitors on site Friday night could make their cattle available to the Young Judges, Handlers & Schools. Free Entry forms for Young Judges/Paraders will be available on the day at the Cattle section office. Friday night program running order as printed. May be changed at the discretion of the Chief Steward

SPONSORED BY SMITHFIELD CATTLE CO PROSTON

Entry Fees: Stud Beef \$10.00 Led Steer: \$15.00.

Ribbons/Sashes for all Classes.

Prize money for Classes 1-16 in each of 3 categories—

1st \$20.00, 2nd \$10.00, 3rd \$6.00. Product/Vouchers to the same value may be substituted for monetary prizes or vice versa.

Class 1. Male Calf under 8 months (still on mother acceptable)

Class 2. Female Calf under 8 months (still on mother acceptable)

Winners are eligible for Junior Champion on Saturday morning Nominations in the Young Judges/Young Paraders & Schools are free,

YOUNG JUDGES: (age as of 1st May 2023)

1st: \$15; 2nd: \$10; 3rd: \$5 plus Medallions

A. **Junior under 10 years** (to be run at the discretion of the Chief Steward)

B. **Junior 10 to 14 years**

C. **Senior 15 years and under 25 years (as of 1st May 2023)**

Winner of Snr Judges Prize donated by Graeme & Val Wicks

SECTION 13 - PHOTOGRAPHY

CHIEF STEWARD: AMANDA STEVENS

Ph: 0448 356 029

CONDITIONS:

All exhibits must be the work of the exhibitor. Photographs may be commercially processed.

All prints must be mounted on black cardboard (not thick). If NOT, then the Chief Steward reserves the right to staple image to cardboard.

General photos - 12cms x 17cms (5x7 inches) with margins of 2½ cms/1 inch

Enlargements -8" x 12" (20cm x 30cm) size with margins of 4cms/1½ inches.

If not size stated photos will not be displayed

NOVICE CLASS – No photo may be photo shopped in any way.

No light changes or adding or removing objects. Cropping allowed

Prints previously awarded 1st Prize at a Wondai Show are ineligible to compete in Novice section

Exhibitors name is **NOT** to appear on the face of the exhibit.

Reverse side of the exhibit must contain the following details :

A) Exhibitor's name, B) Full address, C) Class no. entered, D) Phone number

If the Judge considers an exhibit not of sufficient merit no award will be made.

Where prize/voucher is awarded, no prize money is given.

To determine 'Most Points': 1st 2 point, 2nd 1 point

Entries close to close 12 noon Friday, 25th August 2023 and may be left at Wondai Regional Art Gallery, the Show Office for posted to the Show Secretary (PO Box 159, Wondai 4606).

SECTION 11 - HANDCRAFT continued**12YEARS AND UNDER**

52. Christmas decoration
53. Toy, any fabric
54. Card, handmade
55. Card, stamping
56. Card, computer generated
57. Scrapbooking, single page, any theme
58. Jewellery, any article placed in small plastic bag
59. Folk Art, any article
60. Macrame
61. Any other handcraft, named
62. Diamond Art

EXHIBITOR GAINING MOST POINTS CLASSES 52 - 62

\$15 VOUCHER donated by GOOMERI EMPORIUM

OVERALL CHAMPION CLASSES 52 - 62

Trophy donated by FAY KERKOW

SECTION 12 - GROUP DISPLAY

OPEN TO ALL QCWA OR HANDCRAFT GROUPS AND CLUBS

CHIEF STEWARD: Janet Morris Phone 4168 5394

CONDITIONS

1. Entry Forms must be in the hands of the Show Secretary by Friday 25th August 2023 to reserve display space.
2. All displays to be completed by 9 am Tuesday, 28th August 2023 ready for judging.
3. Display to be not less than 15 items and not more than 20 items.

ENTRY FEE: \$1.00 PRIZE MONEY: 1ST: \$10; 2ND: \$6.00; 3RD: \$4.00

GENERAL RULES

Colour scheme/theme to be chosen by group. Each article of work must be labelled. Only one article of work for each class. No article to have been entered in this Section at any previous show. Points awarded for number of individual articles, numbers of persons contributing, general display and labelling. Group/Club name may be added after judging.

SECTION 3 - STUD BEEF continued

YOUNG PARADERS : 1st: \$15, 2nd: \$10; 3rd: \$5 & Medallions

A. Junior under 10 years

(to be run at the discretion of the Chief Steward)

B. Junior 10 to 14 years

C. Senior 15 years & under 25 years age as of 1st May 2023)

Winner of Snr Paraders Prize from Graeme & Val Wicks

Winners of the above classes (aged 15 years and under 25

years as of **1st May 2023**) will be eligible for the **2024 Sub**

Chamber Finals

A **SCHOOL COMPETITION** runs during the evening.

All schools present & showing cattle are eligible to nominate for the Schools Competition on Friday night. The competition is judged in conjunction with the Young Judges & Paraders.

Points are awarded to the top 5 competitors in each class & the school they represent. 1st 5 points, 2nd 4 points, 3rd 3 points, 4th 2 points & 5th 1 point. At the completion of judging, the school that has the most points is the winner. All prizes will be awarded on a sliding scale (at the discretion of the Chief Steward), with every school in the competition sharing in the total prize pool.

Thank you to **GRAINCORP LIQUID FEEDS,**

AUSSIE LAND & LIVESTOCK

RIVERINA STOCK FEEDS

DARRYL CLEGG



Molafos®

RIVERINA
STOCK FEEDS



SECTION 3 - STUD BEEF continued**SATURDAY 1ST SEPTEMBER 2023****STUD BEEF CATTLE JUDGING**

All cattle are to be on the grounds by 6.30am Saturday 2nd September 2023 for Stewards to complete scanning. Judging Starts at 8.30 am & will be conducted in THREE CATEGORIES (Tropical, European, British) across TWO JUDGING RINGS as directed by Chief Steward

ENTRY FEES: Stud Beef: 10.00 Led Steers: \$15.00
Ribbon/Sashes all Classes.

Product/Vouchers to the same value may be substituted for monetary prizes.

Sponsored by Aussie Land & Livestock

Prize Money for Classes 1 - 16 (in each of the 3 categories):
1st: \$20.00; 2nd: \$10.00; 3rd: \$6.00

- 3. Bull: 8—11 months
- 4. Bull: 12 months to 14 months
- 5. Bull: 15 months to 17 months
- 6. Bull: 18 months to 19 months

**CH JUNIOR BULL - Nutrien Ag Solutions
\$30 Voucher (Class 1 eligible)**

**RESERVE CHAMPION JUNIOR BULL -
Nutrien Ag Solutions \$20 Voucher**

- 7. Bull: 20 months to 23 months
- 8. Bull: 24 months to 29 months
- 9. Bull: 30 months and over

**CHAMPION SENIOR BULL -
Nutrien Ag Solutions \$30 Voucher
RESERVE CHAMPION SENIOR BULL -
Nutrien Ag Solutions \$20 Voucher**

**SECTION 11 - HANDCRAFT continued**

NOVICE DIVISION: open to anyone who has not won a 1st prize at a Show in these classes.

- | | |
|------------------------------|---|
| 31. Toy, any material | 36. Paper Tole any article |
| 32. Folk Art, any article | 37. Birthday card |
| 33. Card, handmade | 38. Assortment of Christmas decorations 3 distinct type |
| 34. Cushion | 39. Handcraft, any other name |
| 35. Coathanger, any material | |

EXHIBITOR GAINING MOST POINTS (Classes 31—39)

\$15 VOUCHER from GOOMERI EMPORIUM

OVERALL CHAMPION CLASSES 1 - 39

TROPHY DONATED BY DELL BLANCH

JUNIOR DIVISION - FREE ENTRY

PRIZE MONEY: 1st: \$4.00; 2nd: \$2.00

Points in this Division (1st - 2 points; 2nd - 1 point) count towards the Barbeques Galore Trophy (See page 57 for details)

13 - 17 YEARS

- | | |
|---|---|
| 40. Christmas decoration | 47. Diamond Art |
| 41. Toy, any fabric | 48. Folk Art, any article |
| 42. Card hand made | 49. Jewellery necklace in small plastic bag |
| 43. Card, stamped | 50. Decoupage |
| 44. Card, computer generated | 51. Any other handcraft named |
| 45. Scrapbooking, double page any theme | |
| 46. Scrapbooking, single page any theme | |

EXHIBITOR GAINING MOST POINTS

JUNIOR DIV 13 - 17 YEARS (Classes 40—51)

\$15 VOUCHER donated by GOOMERI EMPORIUM

OVERALL CHAMPION CLASSES 41 - 50

Donated by FAY KERKOW



SECTION 11 - HANDCRAFT continued

11. Wood burning
12. Mosaic
13. Folk & Decorative art, any article
14. Decoupage
15. Shopping Bag or Basket
16. Any article Fabric Painting
17. Teddy Bear
18. Glass Painting
19. Pottery
20. Fridge Magnet
21. Scrapbooking, double page - Children
22. Scrapbooking, double page - Special Occasion
23. Scrapbooking, single page - Christmas
24. Scrapbooking. Single page - General
25. Leather work, any article
26. Picture any medium
27. Recycled , something new from something old
28. Assortment of 3 Christmas decorations , 3 distinct types
29. Handcraft, any other, named
30. Exhibitor over 70 years, any article

EXHIBITOR GAINING MOST POINTS

CLASSES 11–24 \$15 VOUCHER

Donated by GOOMERI EMPORIUM

EXHIBITOR GAINING MOST POINTS

CLASSES 25 - 30 \$15 VOUCHER

Donated by GOOMERI EMPORIUM

**SECTION 3 - STUD BEEF continued**

10. Female: 8 to 11 months
11. Female: 12 months to 14 months
12. Female: 15 months to 17 months
13. Female: 18 months to 19 months

CHAMPION JUNIOR FEMALE -

Nutrien Ag Solutions \$30 Voucher (Class 2 eligible)

RESERVE CHAMPION JUNIOR FEMALE -

Nutrien Ag Solutions \$20 Voucher

14. Female: 20 months to 23 months
15. Female: 24 months to 29 months
16. Female: 30 months and over

CHAMPION SENIOR FEMALE -

Nutrien Ag Solutions \$30 Voucher

RESERVE CHAMPION SENIOR FEMALE -

Nutrien Ag Solutions \$20 Voucher

TOP 5 STUD BEEF EXHIBITS

(ALL CHAMPIONS & RESERVES REQUIRED)

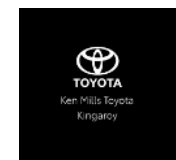
Ken Mills has donated \$100 for the most successful Exhibitor .
Points count towards **Ken Mills Toyota 2023 Aggregate Points** over all South Burnett shows. **Winner to be announced at the Wondai show.**

Stud gaining most points in this Class (1st—5th)

1st \$100 donated by KEN MILLS TOYOTA

2nd - 5th Prizes donated by GRANT, DANIEL, LONG KINGAROY

2nd \$90 3rd \$70 4th \$50 5th \$40



SECTION 3 - STUD BEEF continued**SUPREME CHAMPION BEEF EXHIBITS****(Male & Female) OF 2023 SHOW (ALL BREEDS)****CHAMPION — \$500 VOUCHER SK LIVESTOCK PREG SCANNING****\$150 donated by Josh Steinhardt****RESERVE (opposite gender to Champion exhibit) -****5L MOXILAB & APPLICATOR VALUE \$500****from ELDERS MURGON****\$100 donated by Josh Steinhardt****Product/Vouchers may be substituted for
monetary prizes or vice versa.****ELDERS MURGON
BRANCH
GRAND OPENING****17. Interbreed Exhibitors Group (across all categories):****3 animals owned & bred by the exhibitor and paraded in their
single class. Both sexes must be represented.****1st: \$80 voucher donated by KEWPIE STOCKFEEDS****2nd: 2 bags RIVERINA STOCKFEEDS****3rd: 1 bag RIVERINA STOCKFEEDS****18. Led Steer/Heifer - Open to all breeds and cross breeds,
milk tooth with no restrictions on feeding****Prizemoney for these Classes sponsored by:****KEN MILLS TOYOTA, KEN MILLS MACHINERY & KEN MILLS AUTO****A. LED STEER/HEIFER UNDER 320KG that is being trained for
the 2024 South Burnett Show Season****1st: \$30 2nd: \$20 3rd: \$10****B. LIGHTWEIGHT UNDER 350 KG (PRIME)****1st: \$50 2nd: \$30 3rd: \$20****C. MEDIUM WEIGHT 351 KG TO 450KG****1st: \$50 2nd: \$30 3rd: \$20****D. HEAVYWEIGHT 451KG & OVER****1st: \$50 2nd: \$30 3rd: \$20****SECTION 11 - HANDCRAFT****CHIEF STEWARD: Fay Kerkow****STEWARDS: Monica Dehnert****JUDGING FOR THIS SECTION WILL BE ON FRIDAY 1st SEPTEMBER
CONDITIONS:**

1. **Please note General Pavilion Regulations (on page 56),
especially regarding entry procedures (Points 3 - 6).**
2. If the judge considers an exhibit not of sufficient merit, no
award is to be made.
3. All entries to be the bona fide work of the exhibitor.
4. Winning exhibits not to be re-entered for 2 years.
5. Exhibits may not be entered in more than one class.
6. Where Trophy or voucher is awarded, no prizemoney given.
7. To determine 'Most Points' : 1st - 2 points; 2nd - 1 point.
8. Scrapbooking pages to be in plastic sleeves for display.

ENTRY FEE: 50 cents per entry**PRIZE MONEY - 1st: \$4.00; 2nd: \$2.00 (unless otherwise stated)****OPEN DIVISION**

1. Diamond Art, full article
2. Diamond Art, Partial art on article
3. Jewellery, Necklace or Bracelet
4. Jewellery, pair of Earrings
5. Card, handmade
6. Card, embroidery
7. Card, celebration
8. Birthday Card set of 3
9. Any Article of Quilling
10. Any article of Paper Tole

**EXHIBITOR GAINING MOST POINTS CLASSES 1— 10
\$15 VOUCHER from GOOMERI EMPORIUM**

SECTION 10 - NEEDLEWORK continued**PATCHWORK**

Classes 34 - 41 First place \$10 voucher sponsored by Somethings Country

34. Quilt, hand appliquéd, or hand quilted.
 35. Patchwork quilt, machine sewn and machine quilted with emphasis is on the patchwork.
 36. Patchwork quilt, can feature machine embroidered blocks or other embellished blocks.
 37. Patchwork cushion cover, with insert.
 38. Patchwork wall hanging, with provision to hang.
 39. Patchwork runner or placemat.
 40. Patchwork bag - must be lined. 41. Crazy patch article

**EXHIBITOR MOST POINTS PATCHWORK CLASSES 34 - 41
 VOUCHER donated by WOOROOLIN FABRICS
 CH EXHIBIT CLASSES 1 - 41 PRIZE donated by IVY MURRAY**

JUNIOR DIVISION - FREE ENTRY

PRIZE MONEY: 1st: \$4.00; 2nd: \$2.00

Points in this Division (1st - 2 points; 2nd - 1 point) count towards the Barbeques Galore Trophy (Page 57)

A. (12 years and under)

42. Crochet article 43. Knitted article
 44. Hand embroidery. 45. Patchwork article
 46. Machine sewn article 47. Cross stitch article

**BEST EXHIBIT JUNIOR DIVISION Classes 42—47
 VOUCHER donated by WOOROOLIN FABRICS**

B. (13—17 years)

48. Crochet article 49. Knitted article
 50. Hand embroidery. 51. Patchwork article.
 52. Machine sewn article 53. Cross stitch article

**BEST EXHIBIT JUNIOR DIVISION Classes 48—53
 VOUCHER donated by WOOROOLIN FABRICS**

SECTION 3 - STUD BEEF continued**BEST LED STEER/HEIFER EXHIBITS**

Points count towards 2022 South Burnett Sub-Chamber Led

Steer Aggregate Points Competition

All sponsored by PAKADERINGA FEEDLOT

SUPREME CHAMPION - \$200

RESERVE CHAMPION - \$150

3rd PRIZE - \$100

4th PRIZE - \$50

5th PRIZE - \$30



**Thank you to all our sponsors in the Stud
 Beef & Prime Cattle Sections for helping to
 make the Show a success.**

,SMITHFIELD CATTLE CO, PROSTON

PAKADERINGA FEEDLOT

NUTRIEN AG SOLUTIONS MURGON

KEN MILLS TOYOTA

KEN MILLS MACHINERY

KEN MILLS AUTO

RIVERINA STOCK FEED

KEWPIE STOCK FEED

GRANT, DANIEL, LONG

JOSH STEINHARDT

**NO CATTLE ARE TO LEAVE SHOWGROUNDS
 BEFORE THE END OF THE GRAND PARADE AT
 12.30 PM, WITHOUT PERMISSION FROM CHIEF
 STEWARD. ALL PRIZE PRODUCTS TO BE DISTRIBUTED
 AFTER THE GRAND PARADE**

SECTION 4 - POULTRY

**CHIEF STEWARD - JOHN RUTLEDGE PH: 07 4168 5641
MOBILE: 0400 305 275**

JUDGE: MAL MCDUGALL

CONDITIONS

- **All patrons attending the Show (including exhibitors) pay the Gate Entrance Fee unless in possession of a Pass.**
- Stewards reserve the right to alter a Class without reason.
- No replacement entries will be accepted.
- The Society has the right to refuse entries without reason.
- Classes will be provided for any variety, not specified herein. If 6 or more entries are provided by 2 or more exhibitors. The entries should be specially indicated on the entry form.
- **ALL POULTRY SHOULD BE READY FOR JUDGING - 8.30 AM SATURDAY 2nd September 2023**
- **Junior Exhibitors are to pen their own birds, with adult supervision.**
- Exhibitors will be admitted to the Pavilion during judging at the discretion, and under the control of the Chief Steward.
- If the Judge considers an exhibit not of sufficient merit, no award will be made.
- Championship Cards will be awarded to each breed.
- No bird should be removed until 4.00 pm of Show Day except with the special permission of the Chief Steward.
- Exhibitors must be accompanied by a Steward whilst removing their poultry.

Entry fee to be sent with entry form . No Money = No pen allocation.

ENTRIES CLOSE 5.00 PM SUNDAY 27th August 2023

Entry form from Chief Steward or Secretary

**Cheques payable to Wondai AP&I Society,
or direct deposit BSB 633 000 Acc No 159352418
ref Poultry & Name**

**SECTION 10 - NEEDLEWORK continued****KNITTING**

13. Infant can include matinee jacket, bonnet and booties or any combination of two
14. Garment, fine thread
15. Garment, heavy thread
16. Scarf any size
17. Scarf - any yarn
18. Tea cosy - must be lined
19. Adult cap or beanie
20. Toy or doll
21. Knee rug knitted in wool, no larger than 150cm x 150cm

EXHIBITOR GAINING MOST POINTS**KNITTING CLASSES 13- 21****VOUCHER donated by WOOROLIN FABRICS****CROCHET**

22. Tea cosy - must be lined
23. Dressing table set, centre or runner.
24. Doily
25. Article in medallions, any cotton (not wool) -
26. Article with crochet edge - edge only to be judged
27. Infant set: can include matinee jacket, bonnet & booties, or combination of any two.
28. Jacket. Adult or child—must be specified
29. Shawl, baby or adult
30. Knee rug in wool, no larger than 150cm x 150cm
31. Scarf
32. Jug cover
33. Novelty item

EXHIBITOR GAINING MOST POINTS**CROCHET CLASSES 22 - 33****VOUCHER donated by
WOOROLIN FABRICS**

SECTION 10 - NEEDLEWORK

CHIEF STEWARD: Felicity Jorgensen – Ph: 0437 107 272

STEWARDS: Glenis Radunz, Marian Barnes, Rebecca Reinke & Kylie Thompson

CONDITIONS:

1. Please note General Pavilion Regulations ePage 50) especially regarding entry procedures (Points 3 - 6). Entries to be picked up **AFTER 4.15pm to allow for displays to be dismantled & sorted**
2. If the judge considers an exhibit not of sufficient merit, No award is to be made.
3. All entries to be the bona fide work of the exhibitor.
4. Winning exhibits not to be re-entered for 2 years.
5. Exhibits may not be entered in more than one class.
6. Where trophy or voucher is awarded, no prizemoney is given.
7. To determine 'most points' 1st = 2 points , 2nd = 1 point

ENTRY FEE: 50 cents per entry

PRIZE MONEY - 1st: \$4.00 2nd: \$2.00 (unless otherwise stated)

FANCYWORK & SEWING

Classes 1,2, 4 - 9 First place is \$10 sponsored by Somethings Country

1. Hand embroidery, article to be used (eg cloth, doily etc)
2. Hand embroidery, a decorative article (eg wall hanging etc)
3. Tapestry
4. Cross stitch article, no embellishment
5. Cross Stitch article, with embellishment.
6. Long stitch article
7. Check Gingham Article
8. Hand applique, any article.
9. Machine item— not a garment.
10. Machine sewn garment
11. Shopping Bag, Any Style. Must be lined
12. Thrift—something new from something old



**EXHIBITOR GAINING MOST POINTS
FANCYWORK AND SEWING CLASSES 1 - 12
VOUCHER donated by WOOROLIN FABRICS**

SECTION 4 - POULTRY continued

ENTRY FEE: \$1.00 per entry

PRIZE MONEY: 1st: \$4.00; 2nd: \$2.00

Vouchers/Product to the value of Cash Prizes will be given at the Chief Steward's discretion

SPECIAL PRIZE LIST: sponsored by STEINHARDT PLUMBING,

Champion Large Soft Feather - \$10 plus Sash

Reserve Large Soft Feather - \$5 plus Sash

Champion Large Hard Feather - \$10 plus Sash

Reserve Large Hard Feather - \$5 plus Sash

Champion Bantam Soft Feather - \$10 plus Sash

Reserve Champion Bantam Soft Feather - \$5 plus Sash

Champion Bantam Hard Feather - \$10 plus Sash

Reserve Champion Bantam Hard Feather - \$5 plus Sash

Champion Breeding Pair - \$10 plus Sash

Reserve Champion Breeding Pair - \$5 plus Sash

Champion Modern Game - Trophy



CHAMPION JUNIOR EXHIBIT - Sash & \$20 prize

RESERVE CHAMPION EXHIBIT - Sash plus \$15 prize

(All Junior Exhibitors receive a Certificate of Participation)

GRAND CHAMPION BIRD OF THE SHOW

\$50 PRIZE donated by: J&D RUTLEDGE

T/A RUTLEDGE'S ON FARM BUTCHERING

RESERVE CHAMPION BIRD OF SHOW

Sash plus \$25 PRIZE donated by

SOUTH BURNETT FEATHER CLUB INC.



SECTION 4 - POULTRY continued

Large Soft Feather	Cock	Hen	Ckl	Plt
Orpington	1	2	3	4
Wyandotte White	5	6	7	8
WyandotteAny other Colour	9	10	11	12
Plymouth Rock	13	14	15	16
Rhode Island Red	17	18	19	20
Light Sussex	21	22	23	24
Australorp	25	26	27	28
Langshan	29	30	31	32
Croad Langshan	33	34	35	36
Ancona	37	38	39	40
Leghorn, White	41	42	43	44
Leghorn, any other colour	45	46	47	48
Silkie White	49	50	51	52
Silkie, any other colour	53	54	55	56
Large Soft, any other variety	57	58	59	60

Large Hard Feather	Cock	Hen	Ckl	Plt
OEG Black Red	61	62	63	64
OEG Brown /Red	65	66	67	68
OEG Pile	69	70	71	72
OEG Blue/ Red	73	74	75	76
OEG Duck wing	77	78	79	80
OEG, any other Colour	81	82	83	84
Pitt Game, Light	85	86	87	88
Pitt Game, Heavy	89	90	91	92
Pitt Game Muff	93	94	95	96
Indian Game	97	98	99	100
Australian Game, black/red	101	102	103	104
Australian Game, duck wing	101A	102A	103A	104A
Game, any other variety	105	106	107	108
Breeding Pair, soft feather. Any variety large				109
Breeding Pairs, Hard Feather, any variety Large				110

SECTION 9 - HOME PRESERVES continued**MARMALADE**

11. Sweet Orange
12. Three Fruits
13. Any other Marmalade (named)
14. Collection of 6 x 200g jars - 2 Jam, 2 Butter, 2 Marmalade

Trophy for Class 14 donated by ELSIE KNIGHT

SAUCES, PICKLES & CHUTNEYS

15. Mango Chutney
16. Tomato Chutney or Relish
17. Mustard Pickles
18. Any other Sauce/Pickle/Chutney (named)



**EXHIBITOR MOST POINTS HOME PRESERVES Classes 1-18
PRIZE - donated by Wondai Show Society**

If you forgot to purchase your copy of the Special Publication compiled to celebrate Wondai's 100th Show, we still have a few left. It invokes memories, highlights forgotten happenings, amuses with "stories to tell" and provides an understanding of why the 100th Wondai Show was so important. The book can be purchased from the show office for \$10.00



Published by
WONDAL A. P. & I. SOCIETY INC.
to mark the 100th Show held on the 1st and 2nd
September 2017

SECTION 9 - HOME PRESERVES

CHIEF STEWARD: Elsie Knight - Ph: 3886 1595

CONDITIONS

Please note General Pavilion Regulations (on page 56), especially regarding entry procedures (Points 3 - 6).

1. All fruit and vegetables to be cut by hand.
- All entries to be in glass jars, 250g in size & clearly labelled.
2. All bottles to have screw tops if possible.
3. Jars to be filled to just under the rim.
4. No single article to be entered in any two classes.
5. Where a single entry is received in any class, the judge may use their discretion to award a prize.

ENTRY FEE: 50 cents per entry

PRIZE MONEY - 1st: \$4.00 2nd: \$2.00 (unless otherwise stated)

JAMS & JELLIES

1. Melon & Lemon
2. Fig Jam
3. Rosella Jam
4. Strawberry Jam
5. Passionfruit Butter
6. Lemon Cheese
7. Dried Peach Jam
8. Dried Apricot Jam
9. Pineapple Jam
10. Any other Jam, Jelly or Butter (named)



SECTION 4 - POULTRY continued

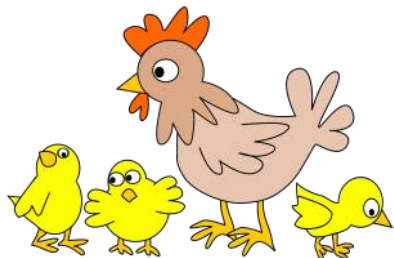
Bantam Soft Feather	Cock	Hen	Ckl	Plt
Black Pekin	111	112	113	114
White Pekin	115	116	117	118
Pekin, any other colour	119	120	121	122
Belgium, any other colour	123	124	125	126
White Wyandotte	127	128	129	130
Wyandotte, any other colour	131	132	133	134
Rhode Island Red	135	136	137	138
Light Sussex	139	140	141	142
Langshan, black	143	144	145	146
Langshan, any other colour	147	148	149	150
Australorp	151	152	153	154
Ancona	155	156	157	158
Leghorn, white	159	160	161	162
Leghorn, any other colour	163	164	165	166
Rose comb	167	168	169	170
Japanese Bantam	167A	168A	169A	170A
Bantam, any other colour	171	172	173	174
Bantam Hard Feather	Cock	Hen	Ckl	Plt
OEG Black /Red Partridge	175	176	177	178
OEG Black /Red Wheaten	179		180	
OEG Blue /Red	181	182	183	184
OEG Blue Tail		185		186
OEG Black Tail		187		188
OEG Spangle	189	190	191	192
OEG Duck Wing	193	194	195	196
OEG Pile	197	198	199	200
OEG, any other colour	201	202	203	204
Modern Game, any colour	205	206	207	208
Modern Game, Duck Wing	209	210	211	212
Modern Game, Black/Red	213	214	215	216
Modern Game Pile	217	218	219	220

SECTION 4 - POULTRY continued

Bantam Hard Feather	Cock	Hen	Ckl	Plt
Indian Game	221	222	223	224
Pit Game Bantam	225	226	227	228
Australian Game, black/red	229	230	231	232
Australian Game, duck wing	229A	230A	231A	232A
Aust Game, any other colour	233	234	235	236
Breeding Pairs Soft Feather	any variety bantam			237
Breeding Pairs Hard Feather	any variety bantam			238

JUNIOR DIVISION	Second-ary	Prima-ry
16 years and under as at 1st May of the current year		
Any variety, Male Large Fowl	239	240
Any variety, Female Large Fowl	241	242
Any variety, Male Bantam	243	244
Any variety, Female Bantam	245	246

Junior exhibitors—PLEASE NOTE: You are to pen your own birds, with adult supervision.



Thank you to the sponsors who have provided product as prizes in this section.

Also, John & Debbie Rutledge and family for their organisation and sponsorship of the section

SECTION 8 - CULINARY continued**RECIPE FOR MILO BISCUITS CLASS 50**

Ingredients: 4oz (125gr) butter 2 tabs Milo
1 small cup sugar 1 ¾ cup SR flour
1 egg ½ cup sultanas chopped

Method: Beat butter & sugar, then add egg & beat well. Add milo, flour & sultanas and mix well. Knead with hands until smooth ball forms. Break off pieces the size of a large marble, place on a greased tray and press out slightly with fork. Bake in a moderate oven for 10 minutes, or until golden.

RECIPE FOR FRUIT SLICE CLASS 55

Ingredients: ¼ lb (125gr) butter/marg ½ cup mixed fruit
1 egg well beaten 1 cup SR flour
¾ cup sugar ¾ cup coconut
Salt & vanilla

Method: Melt butter & fruit in saucepan. Place dry ingredients in bowl, add fruit & butter. Stir in egg & vanilla. Spread in 7x11" (18x28cm) tray & bake in moderate oven for about 20 – 25 mins until golden brown. Ice with lemon icing & cut into squares.



SECTION 8 - CULINARY continued

Recipes for Classes 10, 41, 50 & 55

RECIPE FOR GINGERBREAD CAKE CLASS 10

Ingredients: 1 cup Sugar 1 cup Milk
 1 cup Treacle 1 tab ground ginger
 3/4 cup butter 1 dessert sp nutmeg
 3 eggs 2 teas soda
 3 cups flour

Method: Cream butter, add sugar & eggs, beat well then add treacle & milk, mixing well. Sift flour & spices, and last add soda dissolved in a little hot water. Pour into a square tin, greased & lined and bake at 150° for 1 ½ hours or until cooked

RECIPE FOR COCONUT DELIGHT CLASS 41

Ingredients: 5oz (140g) Butter/Marg 1 ½ cups SR flour
 1 tab cocoa 1 cup crushed cornflakes
 ½ cup sugar 1 cup desiccated coconut
 1 dessert sp golden syrup ½ teaspoon vanilla

Method: Sift flour & cocoa, add cornflakes, sugar & coconut. Melt butter & syrup, add vanilla and blend into dry ingredients. Press into greased 8" x 12" tin (20 x 30cm) & cook until light brown. Ice with chocolate icing & cut into squares.



FREE ENTERTAINMENT



Sponsored by JJ Crumpton & Sons ,
 & Astill's Electrical

Listen to Mr Q & his Band sing 70's to 90's
 From 8.300 pm till late
 In centre ring after the Bull Ride,
 provided this year by Dean Weller & his Bulls
 starting at 6.00 pm



PAVILION REGULATIONS

1. This Association will not be responsible for any loss, damage or theft of any exhibit. This being a condition of entry, all care is taken, but no responsibility.
2. PHOTOGRAPHY and FINE ARTS exhibits must be delivered to Wondai Regional Art Gallery by 12noon Wednesday 23rd August 2023 or the show office
3. Exhibitors should endeavour to have ALL OTHER ENTRIES finalised by 8pm Thursday 31st August 2023
4. The Secretary's Office will be open at the Show grounds 9am to 6pm Monday 28th August – Wednesday 30th August and late (till 7pm) Thursday 31st August to allow for lodgement of Entry Forms, payment of entry monies and collection of Entry Tickets. If you are unable to go to the Showgrounds before Friday, you can phone the Office (phone: 0427 685 171) and lodge your entries so tickets can be ready for collection.
5. Perishable exhibits can be delivered on Thursday 25th August, ready for judging the following morning.
6. Limited processing of entries will be available 6.00am-8.30am on the Friday morning, for perishable exhibits (Sections 5, 6, 7 & 8 – Farm Produce, Fruit & Vegetables, Floriculture, Preserves & Culinary), but wherever possible, Entry Forms, payment of entry monies & collection of Entry Tickets should have been completed previously, with only the delivery of the items taking place on Friday morning.
7. Judging commences at 9.00am on Friday 1st September 2023
8. Stewards have the right to make special classes not listed in the Schedule if entries warrant this.
9. If the Judge considers an exhibit of insufficient merit, no award will be given.
10. Vouchers/trophies may be substituted for cash prizes at the discretion of Chief Steward. *(continued next page)*

SECTION 8 - CULINARY continued

Class 57 Novelty Cake

Exhibitor's own design choice. Fondant covered & decorated
1st \$20 – donated by South Burnett Cake Decorators; 2nd \$15; 3rd - \$10

Class 58 Miniature Cake

Exhibitor's own design choice & shape. Must not exceed 4" (10 cm) with icing
1st \$20 ; 2nd \$15; 3rd - \$10

Class 59 Sugar Craft

Exhibitor's own choice. Must be presented on a Plaque or Fondant covered board.
1st \$20 ; 2nd \$15; 3rd - \$10

Class 60 One Tier Decorated Cake – Juniors aged 5 – 17 years

Exhibitor's own design on fondant covered board, fondant covering on cake. Sugar decorations must be the work of the exhibitor. No artificial flowers or leaves. Ribbon allowed
1st \$10 ; 2nd \$8; 3rd - \$6

THE WONDAL AP& I SOCIETY WOULD LIKE TO THANK
THE FOLLOWING SPONSORS in the Culinary Section

Joyce Sefton, Joyce Zischke, Beryl Smith, Dimities Cottage, Leonie Evans, The Iszlaub Family, Eileen Beer, South Burnett Cake Decorators, Lyn Norton & Gloria Berry



SECTION 8 - CULINARY continued**AGES 16—17 YEARS**

51. Boiled Fruit Cake using 375g Mixed Fruit
52. Jam Drops, plate of 6
53. Muffins to be named, plate of 4 No papers
54. Sultana scones, plate of 4
55. Fruit Slice, plate of 4 pieces recipe supplied

MOST POINTS 16—17 YEARS**\$10 donated by EILEEN BEER**

CHAMPION EXHIBIT JUNIOR DIVISION - CLASSES 33 - 55
PRIZE donated by NORMA ISZLAUB

ENCOURAGEMENT AWARD SECONDARY DIVISION -
\$5 donated by DEL BLANCH

CHAMPION EXHIBIT CULINARY SECTION (Classes 1 – 55)
PRIZE donated by WONDAL WOODCRAFTERS

CULINARY SECTION 8B DECORATED CAKES

Chief Steward : Gloria Berry Ph 0347 774 238

Assist Steward: Sandy Taylor Ph 0422 975 559

Entry Fee \$1.00 Entries close 9am Friday 1st September 2023

Sponsored by South Burnett Cake Decorators, Wondai Show Society, Lyn Norton, Gloria Berry & Leonie Evans

Conditions:

1. Cake dummies may be used for all classes except Sugar Craft
2. Fondant covering to be used for iced cakes
3. No artificial flowers, leaves or other decorations. Ribbons allowed

Class 56 Special Occasion Cake Iced with Fondant & bearing an inscription. Own Choice Exhibitor's work only 1st \$20 – donated by South Burnett Cake Decorators; 2nd \$15; 3rd - \$10

PAVILION REGULATIONS continued

11. All exhibits must be the bona fide work of the exhibitor.
12. To determine 'Most Points' in Sections:
1st - 2 points, 2nd - 1 point.
13. **No exhibit shall be removed from the Pavilion before 4.00pm Saturday 2nd September 2023 without the permission of the Secretary or Chief Hall Steward.**
14. Prizemoney, unless otherwise stated, is to be collected from the Office on Saturday 2nd September 2023 between 4.00pm and 5.00pm. If unclaimed after two weeks, prizemoney will revert to the Show Society.

All exhibitors pay Gate Entrance unless in possession of Pass

To encourage Junior Exhibitors in the Pavilion a Trophy and \$50 awarded to BOY and GIRL (17years and under unless otherwise stated in Sections) gaining most points in Junior Divisions in the Pavilion (Fruit & Vegetables, Culinary, Floriculture, Needlework, Handcraft, Fine Arts & Photography) 2 points for 1st, 1 point for 2nd.

Sponsored by
Barbeques Galore Bundaberg & Hervey Bay
 (David Carter & Noreen Brier)

**BARBEQUES
 GALORE**

Bundaberg

SECTION 5 - FARM PRODUCE**CHIEF STEWARD: Josh Steinhardt Ph: 0487 116 217****STEWARD: Laurie Martin****This section sponsored by UNICORN SPECIALTY FOODS.****CONDITIONS**

1. Please note **General Pavilion Regulations (on page 53)** especially regarding entry procedures (Points 3 - 6).
2. All exhibits in this section to be grown in the State.
3. Sheaves to be not less than 40 cms in circumference; collections of sheaves to 20 cms circumference.
4. Exhibits in collections of Farm Produce are not to compete in other classes. The same applies between individual classes.
5. Where a trophy or voucher is awarded, no prize money is given.

ENTRY FEE: 50 cents per entry**PRIZE MONEY - 1st: \$4.00 2nd: \$2.00** (unless otherwise stated)**SHELLED MAIZE: 2.0 kg minimum**

1. Any Pioneer variety
2. Any Pacific variety
3. Any other variety, named

MAIZE: 3 COBS (dry)

4. Any Pioneer variety
5. Any Pacific variety
6. Any other variety, named

MAIZE: BUNDLE OF 3 STALKS WITH COBS

(leaves, husks may be removed)

7. Any Pioneer variety
8. Any Pacific variety
9. Any other variety, named

**BEST MAIZE EXHIBIT: 20L PROLUBE ULTRAFLEET donated by LOWES PETROLEUM****SECTION 8 - CULINARY continued****DIVISION F JUNIOR DIVISION—free entry.****PRIZE MONEY: 1st - \$4.00 2nd - \$2.00****Points in this Division (1st - 2 points; 2nd - 1 point) count towards the Barbeques Galore Trophy (Page 57)****PRIMARY STUDENTS AGED 12 yrs & Under****(small paper plates only to be used for classes 33 & 34)**

33. Arrowroot biscuits, 3 iced & decorated (Aged 4 to 5 years)
34. Decorated Cup Cakes, 4 iced (Aged 6—8 years)
judged on decoration only

**Ages 12 & Under**

35. Sweet Scones, plate of 4
36. Cornflake Biscuits, plate of 4
37. Anzac Biscuits, plate of 4
38. Pikelets, plate of 4
39. Chocolate Bar Cake - iced on top only
40. Packet Cake, Sultana Bar –front of packet shown
41. Coconut Delight (recipe supplied)

MOST POINTS PRIMARY STUDENTS - \$10.00 donated by EILEEN BEER
ENCOURAGEMENT AWARD PRIMARY \$5.00 donated by EILEEN BEER**SECONDARY STUDENTS (Ages 13—15 yrs)**

42. Plain Scones, plate of 4
43. Cup Cakes, 4 papers removed, plain icing, no decoration
44. Pikelets, plate of 4
45. Muffins, plate of 4 named, no papers
46. Chocolate Bar Cake iced on top
47. Chocolate Slice, iced on top, plate of 4 pieces
48. Packet Slice. Made as packet, 4 pieces, label included
49. Peanut Biscuits, plate of 4
50. Milo Biscuits, plate of 4 recipe supplied

MOST POINTS AGES 13—15 - Trophy donated by Leonie Evans
ENCOURAGEMENT AWARD PRIMARY (Classes 42—50)
\$5.00 donated by EILEEN BEER

SECTION 8 - CULINARY continued

18. Ginger Biscuits or Ginger Nuts, plate of 6
19. Coconut Biscuits, plate of 6
20. Anzac biscuits, Plate of 6

BEST EXHIBIT DIVISION A
\$25 donated by Joyce Sefton

DIVISION B: ALLERGY FREE

21. Gluten Free Cake – Packet cake front to be provided
22. Gluten Free Slice, plate of 6 to be named

DIVISION C: MALE COOKS OPEN

23. Packet Cake – front of packet to be provided.
- First Prize \$5 donated by Leonie Evans**

DIVISION D: FRUIT CAKES

24. Rich Fruit Cake, 250g mixture including whole currants, cut raisins, sultanas, cut mixed peel & cherries. Baked in a tin not exceeding 20cm square.

MRS B ISZLAUB MEMORIAL PRIZE

1st: \$10.00; 2nd: \$5.00

**Highest South Burnett placegetter eligible to enter
 2024 SB Subchamber Rich Fruit Cake competition.**

25. Boiled Fruit Cake, using 375g mixed fruit
1st \$12, 2nd \$ 8.00, 3rd \$5.00 donated by Joyce Sefton
26. Pumpkin Fruit Cake, round tin
27. Sultana Bar
28. Sticky Date Pudding, steamed in basin -

DIVISION E: CONFECTIONARY

(Small paper plates to be used)

29. Coconut Ice, plate of 6
30. Chocolate Fudge, plate of 6
31. Marshmallows, plate of 6
32. Confectionary, any variety to be named, plate of 6

BEST EXHIBIT DIVISIONS B, C,D,& E
\$25 voucher donated by DIMITIES COTTAGE
CHAMPION EXHIBIT CULINARY CLASSES 1—32
\$50 donated by our PATRON JOYCE SEFTON

SECTION 5 - FARM PRODUCE continued**GRAIN SORGHUM SEED - 2 kg minimum**

10. Any Pioneer variety
11. Any Pacific variety
12. Any Nuseed variety
13. Any other variety, named



GRAIN SORGHUM: heads on stalks, min 3 heads (leaves, roots may be removed)

14. Any Pioneer variety
15. Any Pacific variety
16. Any Nuseed variety
17. Any other variety, named

BEST SORGHUM EXHIBIT: 1 bag Pioneer Sorghum Seed**PEANUTS IN SHELL: 1.5 kg minimum**

18. Red Spanish
19. White Spanish
20. Virginia Bunch
21. Any other variety, named

PEANUT KERNELS: 1 kg minimum

22. Red Spanish
23. White Spanish
24. Virginia Bunch
25. Any other variety, named

**PEANUTS BUSH (dry)**

26. Red Spanish
27. White Spanish
28. Virginia Bunch
29. Any other variety, named

SHEAVES: NOT NECESSARILY DRY (to be judged on grain potential)

30. Wheat, any variety
31. Barley, any variety

SECTION 5 - FARM PRODUCE continued**SHEAVES (continued):**

32. Oats, any variety
33. Millet, any variety
34. Sunflower, 2 heads on stalks
35. Any other variety, named
36. Collection of Sheaves, named

SHEAVES: GREEN (to be judged on haymaking qualities)

37. Wheat
38. Barley
39. Oats
40. Forage Sorghum
41. Lucerne
42. Any other variety, named



**BEST GREEN SHEAF EXHIBIT (classes 37 - 42) 20L PROLUBE
ULTRAFLEET donated by LOWES PETROLEUM**

SEEDS

43. Soya Beans, any variety
44. Sunflower (oilseed)
45. Sunflower (birdseed)
46. Navy Beans
47. Mung Beans
48. Millet, any variety
49. Rhodes (300g minimum)
50. Green Panic (300g minimum)
51. Any other variety, named

**BEST EXHIBIT Classes 43-51**

\$50 donated by Unicorn Specialty Foods P/L Wondai

GRAIN: 1.5 kg minimum

52. Wheat, any variety
53. Barley, any variety
54. Oats, any variety
55. Any other variety, named
56. Collection, 3 minimum, named

SECTION 8 - CULINARY

CHIEF STEWARD: Del Blanch 0428 689 329

**STEWARDS: Leonie Evans, Delma Robbins, Ann Kerkow, Marie Klibbe
CONDITIONS**

1. **Please note General Pavilion Regulations (Page 56) especially regarding entry procedures (Points 3 - 6).**
2. White paper plates, or white cardboard plates to be used for displaying exhibits
3. Only one entry per exhibitor in any class.
4. No packet mixture permitted unless otherwise stated.

ENTRY FEE: 50 CENTS PER ENTRY

PRIZE MONEY - 1ST: \$4.00 2ND: \$2.00 (unless otherwise stated) ..

SECTION 8A**DIVISION A**

1. Scones, Plain, 6
2. Scones, Sweet 6
3. Scones, Pumpkin, 6
4. Pikelets, 6
5. Butter Sponge Sandwich, egg & sugar mixture, jam filling
6. Peach Blossom Cake, bar tin, iced on top only
7. Marble Cake, round tin, pink icing, top only
8. Orange Bar Cake, iced, top only
9. Kentish Cake, bar tin, coconut, sultanas, cherries, walnuts, iced on top, chocolate icing sprinkled with crushed nuts or coconut .
1st Prize \$10.00. 2nd Prize \$5.00 donated by Joyce Zischke
10. Feature Cake - Gingerbread Cake – recipe supplied.-

Mrs AV Smith Memorial

\$10 donated by Beryl Smith. 2nd \$5 3rd \$2.50

11. Health Cake, to be named (bar tin)
12. Date Loaf, dark, (bar tin)
13. Cake, any other variety, to be named
14. Cup Cakes, plate of 6, iced, cooked in tins
15. Raspberry Slice, plate of 6
16. Slice, any variety, plate of 6, to be named
17. Muffins, fruit, plate of 6, to be named, no papers
18. Ginger Biscuits or Ginger Nuts, plate of 2

SECTION 7 - FLORICULTURE continued**DIVISION 3: DECORATIVE WORK**

Flowers need not be grown by exhibitor.

Any greenery & accessories may be used. **ENTRY: 50 cents**

PRIZE MONEY - 1st: \$5.00 2nd: \$3.00

A. OPEN

74. Arrangement depicting a song (to be named)
75. Arrangement for a Silver or Golden Wedding
76. Arrangement of Flowers (1 colour only)
77. Miniature arrangement, not more than 10cms in height
78. Arrangement of Australian Natives (flowers and foliage)
79. Making the most of one flower
80. Arrangement of Lavender and Lace

B. NOVICE (open to anyone not having won a prize at a Show In Decorative Classes; exhibitors can only enter in these classes for 2 years)

81. Arrangement using Kitchen Utensil
82. Basket of Flowers
83. Arrangement using 3 Flowers and 3 Leaves only.
84. Arrangement of flowers in 2 colours (foliage may be used)
85. Arrangement for Table Centre

CHAMPION EXHIBIT DECORATIVE WORK (Classes 74-85)

\$20.00 PRIZE donated by WONDAI AND DISTRICT GARDEN CLUB

C. JUNIOR (12 years and under)

FREE ENTRY PRIZE MONEY - 1st: \$4.00 2nd: \$2.00

Points in this Division (1st - 2 points; 2nd - 1 point) count towards the Barbeques Galore Trophy

86. Arrangement in shoe or boot
87. Gents or Ladies Buttonhole or Corsage
88. Floral Saucer
89. Vase of Flowers arranged for effect
90. Basket of Flowers

D. JUNIOR (13 years to 17 years)

FREE ENTRY PRIZE MONEY - 1st: \$4.00 2nd: \$2.00

Points in this Division (1st - 2 points; 2nd - 1 point) count towards the Barbeques Galore Trophy

91. Arrangement in shoe or boot
92. Gents or Ladies Buttonhole or Corsage
93. Floral Saucer
94. Vase of Flowers arranged for effect
95. Basket of Flowers

**BEST EXHIBIT JUNIOR DIVISION (Classes 86-94) -
PRIZE donated by LYNETTE ADRIAANS**

SECTION 5 - FARM PRODUCE continued**CHAFF: 5 kg minimum**

57. Lucerne
58. Oaten
59. Any other variety, named

**HAY: 1 bale**

60. Lucerne
61. Peanut
62. Any other variety, named

PUMPKINS

63. Queensland Blue, 2
64. Jarrahdale, 2
65. Jap, 2
66. Butternut, 2
67. Any other Table Pumpkin named
68. Heaviest Pumpkin
69. Collection of Table Pumpkins, named

**MELONS**

70. Pie Melon
71. Citron Melon

**ROOT CROPS**

72. Onions, white, 3
73. Onions, brown, 3
74. Potatoes, Sebago, 2.5kg min. (judged on marketing ability)
75. Potatoes, Pontiac, 2.5kg min. (judged on marketing ability)
76. Potatoes, AOV, 2.5kg min. (judged on marketing ability)
77. Potatoes, 3 largest
78. Potatoes, sweet white
79. Potatoes, sweet red
80. Potatoes, any other variety, named

**EXHIBITOR MOST POINTS FARM PRODUCE - \$50 donated by
UNICORN SPECIALTY FOODS**

SECTION 6 - FRUIT & VEGETABLES**SECTION 6 – FRUIT & VEGETABLES****CHIEF STEWARDS: THE ZISCHKE FAMILY- Ph: 4168 9848****STEWARD: DENNIS MORRIS****CONDITIONS**

1. Please note **General Pavilion Regulations** , (Page 56) especially regarding entry procedures (Points 3 - 6).
2. All exhibits to be grown in Qld by the exhibitor (unless otherwise stated)

ENTRY FEE: 50 cents per entry**PRIZE MONEY - 1st: \$4.00 2nd : \$2.00** (unless otherwise stated)**EGGS**

1. Hen Eggs: Tinted, 6
2. Hen Eggs: White, 6
3. Hen Eggs, Brown, 6



(Classes 1-3 judged on the best marketing quality)

4. Bantam Eggs. 6
5. Heaviest Eggs, 6 – 1st \$5, 2nd \$4, 3rd \$3.
6. Any other eggs not mentioned.

HONEY

7. Honey, any variety, 2 jars

**FRUIT**

- | | | |
|--------------------------|----------------------|----------|
| 8. Tangelo, 3 | 9. Oranges, 3 | |
| 10. Oranges, Navel, 3 | 11. Mandarins, 3 | |
| 12. Lemon, Meyer, 3 | 13. Lemon, Lisbon, 3 | |
| 14. Lemon, Bush, 3 | 15. Lemonade, 3 | |
| 16. Lemon, AOV, 3, named | 17. Limes, 3 | 18. |
| Grapefruit, 3 | 19. Citrons, 3 | 20. Col- |
- lection of citrus fruits, named
21. Custard apples, 3
 22. Pawpaws, 3
 23. Passionfruit, 3
 24. Avocado pears, 3
 25. Strawberries, plate
 26. Loquats, 1 dozen
 27. Fruit, any other variety, named

EGGS

1. Hen Eggs: Tinted, 6
2. Hen Eggs: White, 6

SECTION 7 - FLORICULTURE continued**DIVISION 2: CUT FLOWERS (continued)**

49. Gerberas, single, 3 different colours
50. Gerberas, double, 3 different colours
51. Collection of Gerberas
52. Collection of Hybrid Gerberas
53. Candytuft
54. Ranunculus
55. Camellia, 1 bloom
56. Daffodil, 1 bloom
57. Collection of Daisies, mixed
58. Anemones
59. Calendulas, orange tones, 3 blooms
60. Calendulas, lemon tones, 3 blooms
61. Collection of Calendulas
62. Collection of Petunias, singles
63. Collection of Petunias, double
64. Geranium, single, 1 cut
65. Geranium, semi double, 1 cut
66. Geranium, double, 1 cut
67. Geranium, ivy, 1 cut
68. Collection of Geraniums
69. Pelargoniums, 1 spike
70. Freesias
71. Nasturtiums
72. Flower, unspecified to be named
73. Collection of cut flowers

**EXHIBITOR MOST POINTS DIVISION 1 & 2****PRIZE donated by WONDAI AND DISTRICT GARDEN CLUB****CHAMPION BLOOM OF SHOW - \$20 PRIZE****donated by WONDAI & DISTRICT GARDEN CLUB**

Put it on your calendar **2023 Wondai Spring Garden Expo**
When? 23& 24th September 2023
Where? Wondai Sportsground & Lions Pavilion on the
Bunya Highway
Contact Helen Young Ph: 4168 9297 for details

SECTION 7 - FLORICULTURE continued**DIVISION 2: CUT FLOWERS**

14. Stocks, 3 cuts, same colour
15. Stocks, 3 cuts, different colours
16. Collection of Stocks
17. Leptospermum
18. Geraldton Wax
19. Statice, annual
20. Statice, perennial
21. Snapdragons, 3 spikes, same colour
22. Snapdragons, 3 spikes, different colours
23. Collection of Snapdragons
24. Iris, 1 cut
25. Any other Bulb type flower
26. Sweet Peas, 4 cuts, same colour
27. Sweet Peas, 4 cuts, different colours
28. Collection of Sweet Peas
29. Collection of Dwarf Sweet Peas
30. Nemesisias
31. Poppies, any variety
32. Mini Rose, 1 cut
33. Rose, any colour, 1 bloom
34. Violas
35. Violets
36. Pansies, 3 different colours
37. Pansies, 6 different colours
38. Pansies, 12, not all need to be different
39. Flowering Vine, 1 stem
40. Flowering Natives, 3 stems, each different
41. Foliage shrub with/without berries, 1 stem
42. Flowering shrub, 3 stems, each different
43. Gladiolus, 1 bloom
44. Arum Lily, 1 bloom
45. Carnation, 1 bloom
46. Carnations, 3 blooms, different colours
47. Phlox
48. Larkspurs
49. Gerberas, single, 3 different

**SECTION 6—FRUIT & VEGETABLES continued****BEST EXHIBIT FRUIT (Classes 8-27)****PRIZE donated by JOYCE ZISCHKE****EXHIBITOR GAINING MOST POINTS IN FRUIT CLASSES (8-27)****OSCAR JARVIS MEMORIAL TROPHY donated by ELSIE KNIGHT****NUTS**

28. Queensland/Macadamia nuts, 1 dozen
29. Pecan nuts, 1 dozen

VEGETABLES

30. Tomatoes, red, 3
31. Tomatoes, egg shaped, 4
32. Eschallots, single bunch
33. Silver Beet, bunch
34. Celery, bunch
35. Cauliflower, 1
36. Cabbage, Sugar Loaf, 1
37. Cabbage, Flat Head, 1
38. Cabbage, AOV, 1
39. Cabbage, Heaviest, 1
40. Lettuce, Mignonette, 1
41. Lettuce, Lakes, 1
42. Lettuce, any other variety,
43. Turnips, any variety, 3
44. Beetroot, 4
45. Radishes, long, 6
46. Radishes, round, 6



SECTION 6 - FRUIT & VEGETABLES continued

47. Rhubarb, bunch
48. Broccoli, 1 plate
49. Peas in pod, 1 plate
50. Carrots, short, 4
51. Carrots, long, 4
52. Leeks, bunch
53. Snow peas, 1 plate
54. Bok Choy
55. Any vegetable not specified, named
56. Collection of vegetables, named
57. Collection of Green Herbs named
58. Any unusual fruit or vegetable named

**BEST EXHIBIT VEGETABLES -****PRIZE donated by RAY ZISCHKE****EXHIBITOR GAINING MOST POINTS IN VEGETABLES CLASSES****TROPHY donated by JOYCE ZISCHKE****JUNIOR DIVISION (17years and under) - FREE ENTRY****Prize Money - 1st: \$4.00; 2nd: \$2.00; 3rd: \$1.00****Points in this Division (1st - 2 points; 2nd - 1 point) count towards the Barbeques Galore Trophy (See page 54 for details)**

- | | |
|----------------------|----------------------------------|
| 59. Beetroot, 3 | 67. Oranges, 3 |
| 60. Table Pumpkin, 1 | 68. Mandarins, 3 |
| 61. Cabbage, 1 | 69. Lemons, 3 |
| 62. Lettuce, 1 | 70. Strawberries, 1 plate |
| 63. Peas, 1 plate | 71. Any other fruit, named |
| 64. Carrots, 3 | 72. Hen Eggs, white or tinted, 6 |
| 65. Radishes, 6 | 73. Hen Eggs, brown, 6 |
| 66. Other veg, named | 74. Bantam Eggs, 6 |
- 75. Best Decorated Vegetable or Fruit**

BEST EXHIBIT JUNIOR DIVISION**PRIZE donated by DENISE STEINHARDT****SECTION 7 - FLORICULTURE****CHIEF STEWARD: Lynette Adriaans - Ph: 4168 2876****STEWARD: Denise Steinhardt****CONDITIONS**

1. **Please note General Pavilion Regulations (on page 56) especially regarding entry procedures (Points 3 - 6).**
2. All exhibits in **Division 1** must be the property, for at least 6 months, of the exhibitor, unless otherwise stated, & must be the work of 1 person only.
3. Every **pot plant** must be established in the pot or box in which it is shown.
4. Exhibits in single classes are not eligible in collections.
5. Green bottles are preferred for displaying exhibits.

ENTRY FEE: 50 cents per entry**PRIZE MONEY - 1st: \$4.00 2nd: \$2.00 (unless otherwise stated)****DIVISION 1: PLANTS IN POTS**

1. Palm
2. Maidenhair
3. Fern, any other variety
4. Cacti or Succulent
5. Pot Plant in flower
6. Begonia
7. Collection of 3 Pot Plants
8. Plant, 1 pot, any variety
9. African Violet, 1 pot
10. Orchid -
11. Foliage Pot Plant
12. Hanging Basket, Fern or other than Fern
13. Bromeliad

**Trophy donated by SOUTH BURNETT ORCHID CLUB****BEST EXHIBIT IN POTS (EXCLUDES ORCHIDS)
\$25 VOUCHER donated by DIMITIES COTTAGE**

PAVILION ENTRY FORM Block capitals please

Wondai AP&I Society Inc

PAVILION ENTRY (use one form per Section) - Section :

Office Use	Class No.	Particulars of Exhibit	Entry Fee	

Total Fees: \$.....

I hereby enter the above, subject to the Rules & Regulations of the Society

Signature of Exhibitor.....

Please print the following details in BLOCK LETTERS:

Name:

Age (Junior Division only - as of 1st May of Current Year).....

Address:

Email:

Phone: Mobile:

Please use a separate Entry Form for each Pavilion Section

PAVILION ENTRY FORM Block capitals please

Wondai AP&I Society Inc

PAVILION ENTRY (use one form per Section) - Section :

Office Use	Class No.	Particulars of Exhibit	Entry Fee	

Total Fees: \$.....

I hereby enter the above, subject to the Rules & Regulations of the Society

Signature of Exhibitor.....

Please print the following details in BLOCK LETTERS:

Name:

Age (Junior Division only - as of 1st May of Current Year).....

Address:

Email:

Phone: Mobile:

Please use a separate Entry Form for each Pavilion Section

PAVILION ENTRY FORM Block capitals please

Wondai AP&I Society Inc

PAVILION ENTRY (use one form per Section) - Section :

Office Use	Class No.	Particulars of Exhibit	Entry Fee	

Total Fees: \$.....

I hereby enter the above, subject to the Rules & Regulations of the Society

Signature of Exhibitor.....

Please print the following details in BLOCK LETTERS:

Name:

Age (Junior Division only - as of 1st May of Current Year).....

Address:

Email:

Phone: Mobile:

Please use a separate Entry Form for each Pavilion Section

PAVILION ENTRY FORM Block capitals please

Wondai AP&I Society Inc

PAVILION ENTRY (use one form per Section) - Section :

Office Use	Class No.	Particulars of Exhibit	Entry Fee	

Total Fees: \$.....

I hereby enter the above, subject to the Rules & Regulations of the Society

Signature of Exhibitor.....

Please print the following details in BLOCK LETTERS:

Name:

Age (Junior Division only - as of 1st May of Current Year).....

Address:

Email:

Phone: Mobile:

Please use a separate Entry Form for each Pavilion Section